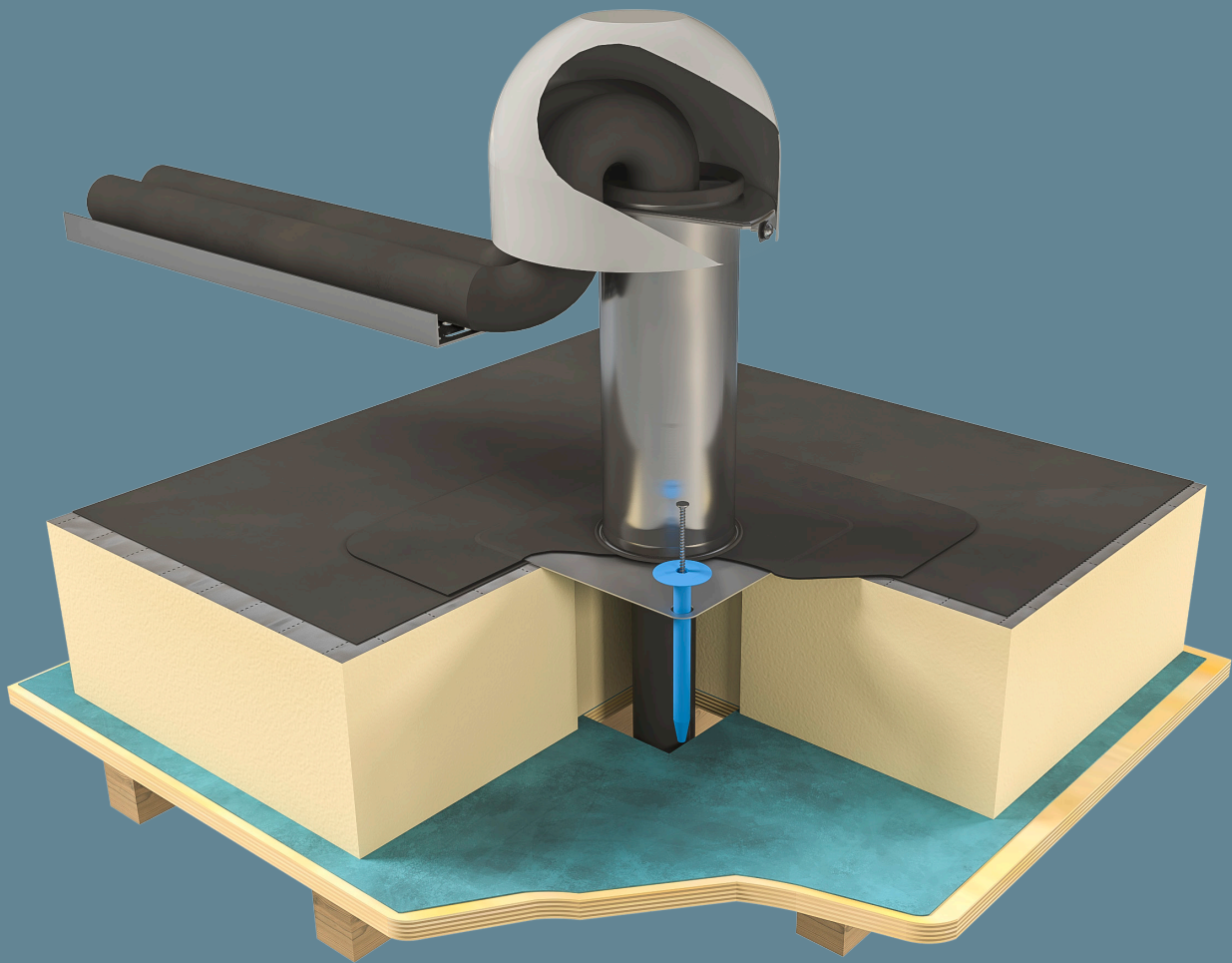
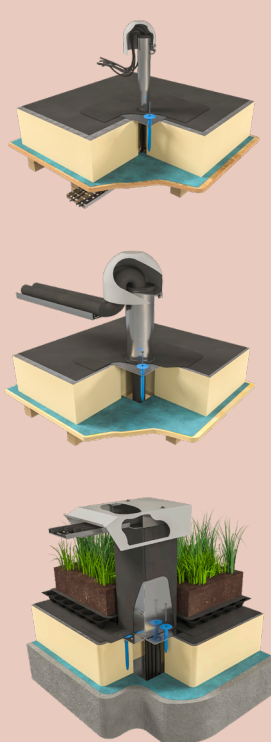
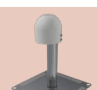

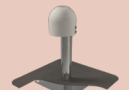





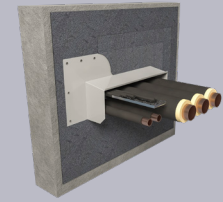
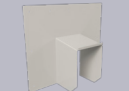



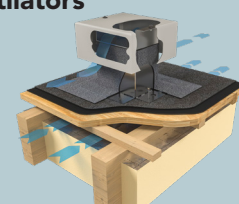
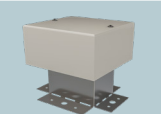
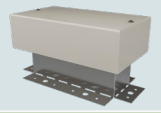


ROOFPORT™

roof penetration
and ventilation fittings



Index

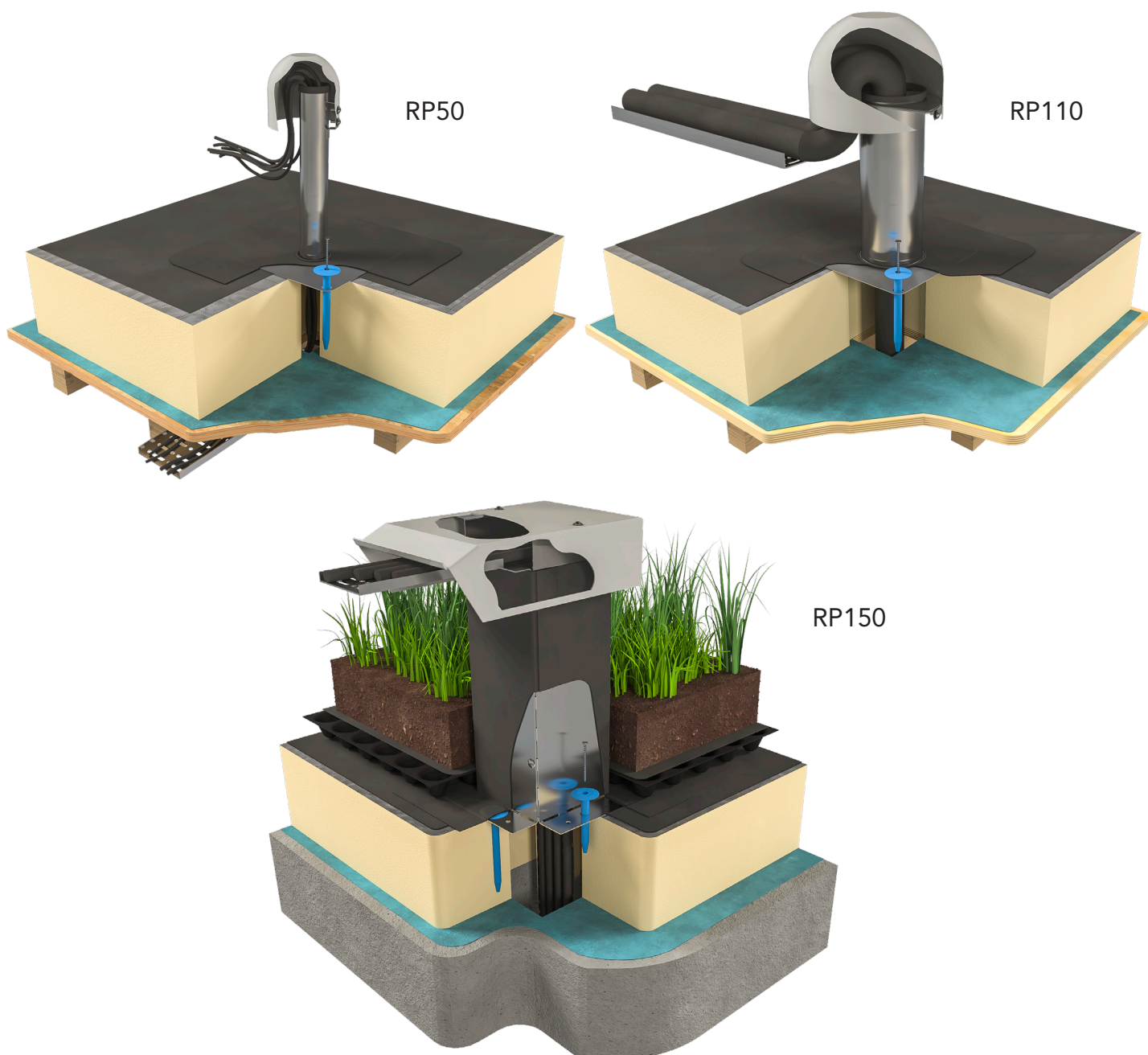
Product	Description	Image	Page
Roof penetration fittings 	RP50SS		4-5
	RP50SBS		6-7
	RP50SP		8-9
	RP110SS		10-11
	RP110SBS		12-13
	RP110SP		14-15
	RP150		16-17
	RP150-400		16-17
Weathering hoods 	RPWH-150		20
	RPWH-300		21
	RPWH-450		22
	RPWH-600		23
Roof ventilators 	RPV15		26-27
	RPV30		28-29
Bespoke Products			30

ROOFPORT™ RP

roof penetration fittings

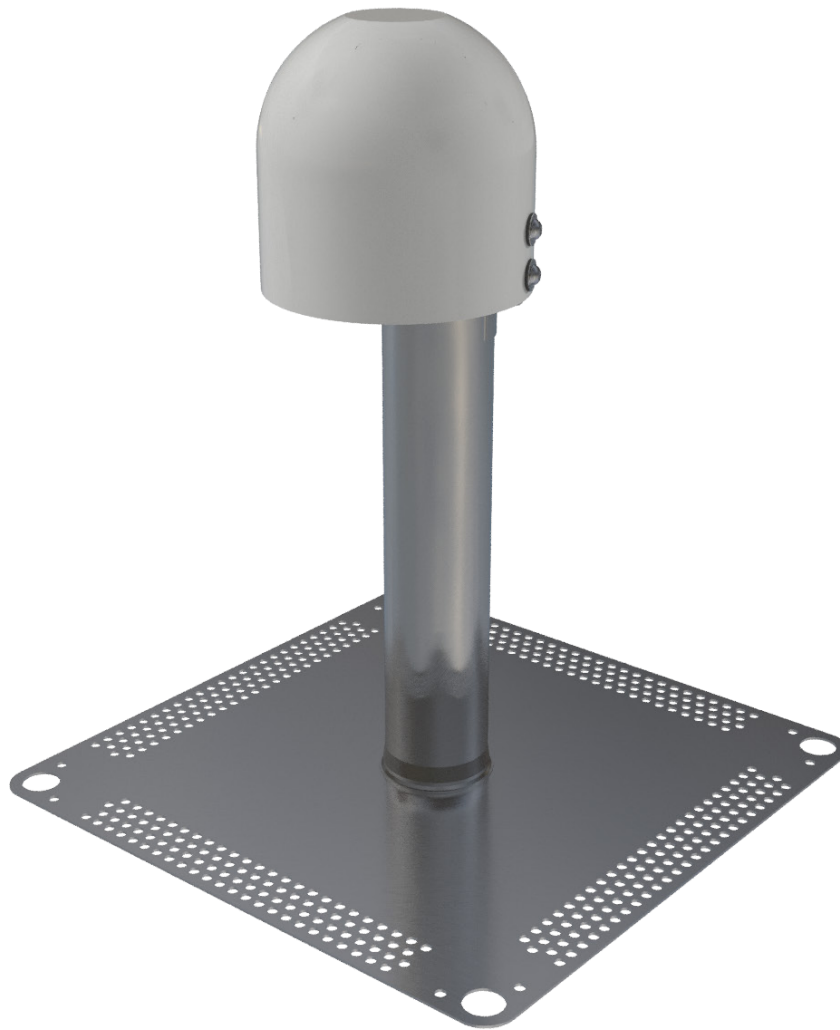
The Roofport RP range of fittings provide a weatherproof entry/exit point for pipes and cables as they pass through the all important weathering membrane. All have removeable weathering cowls to facilitate ease of use and the ability to add services at a later date.

All can be used with virtually any roof covering material and are capable of being fitted to existing roofs. These fittings are for use with smaller service penetrations such as cables and smaller flexible pipes.



RP50SS

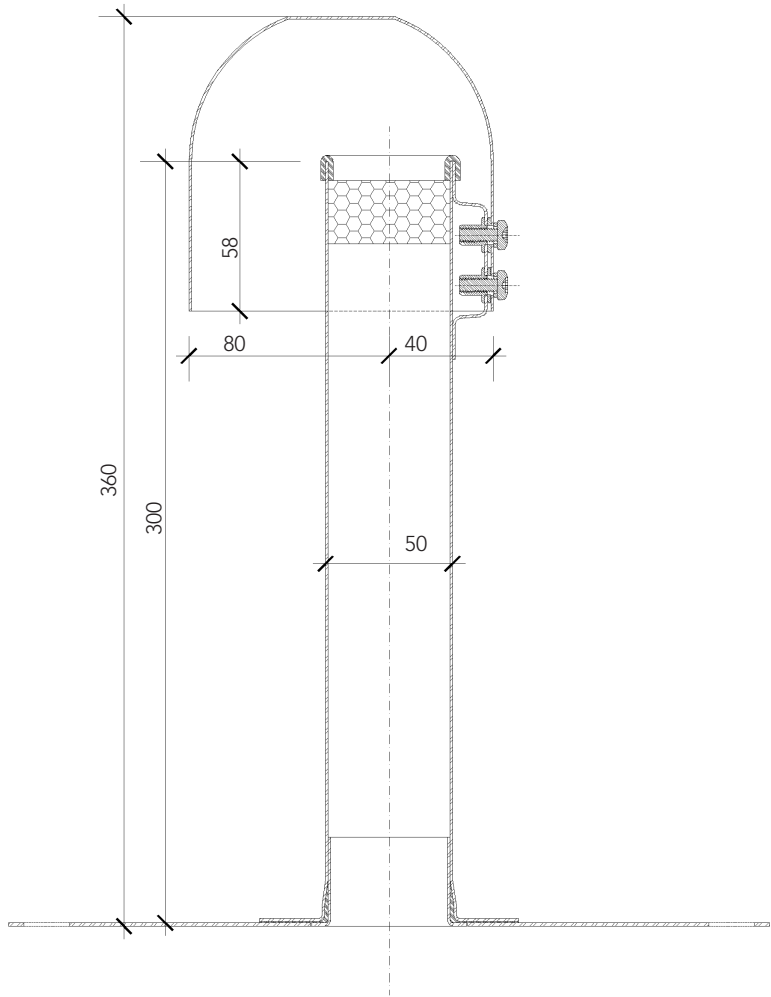
Roof penetration fitting with stainless steel flange



Description	The RP50SS has a 50mm diameter upstand and a removable weathering hood. The top of the upstand has a rubber gasket to protect the services as they exit the upstand. With an internal diameter of 48mm, this product can be used to provide entry/exit for smaller cables and services through the weathering layer.	
Typical uses	Electrical cables	
	IT cabling	
	PV cables	
	Lightning conductors	
For use with	The RP50SS can be used on cold and warm roof constructions and is compatible with the following roof weathering materials; Asphalt, Bitumen systems, GRP, Liquid applied systems, Single ply systems, Lead roofing, Hard metal roofing.	
Materials	Base plate	stainless steel 300mm x 300mm x 0.5mm
	Upstand	50mm Ø OD stainless steel x 300mm high
	Hood	Aluminium, PPC RAL 7047
	Gasket	EPDM rubber
Flange material	Stainless steel - requires a weathering seal to the pipe upstand	

RP50SS

technical information



Installation & weathering

The RP50SS can be fitted during or after the roof installation. The unit should be fixed through the base plate using either direct or thermally broken fixings. A weathering to the upstand should be made in the same material as the main roof area. This flashing should extend 150mm above the roof surface and be in accordance with the roof system manufacturers recommendations. For some roof systems the weathering of this product may need to be carried out by an approved contractor to ensure the roof warranty is not affected.

Cables or pipework should be sealed at the VCL level and the rubber gasket should be fitted at the top of the unit. The retaining screws that secure the hood should be tightened and checked on completion. For exposed locations we would recommend a suitable thread-locking agent is used.

Related products

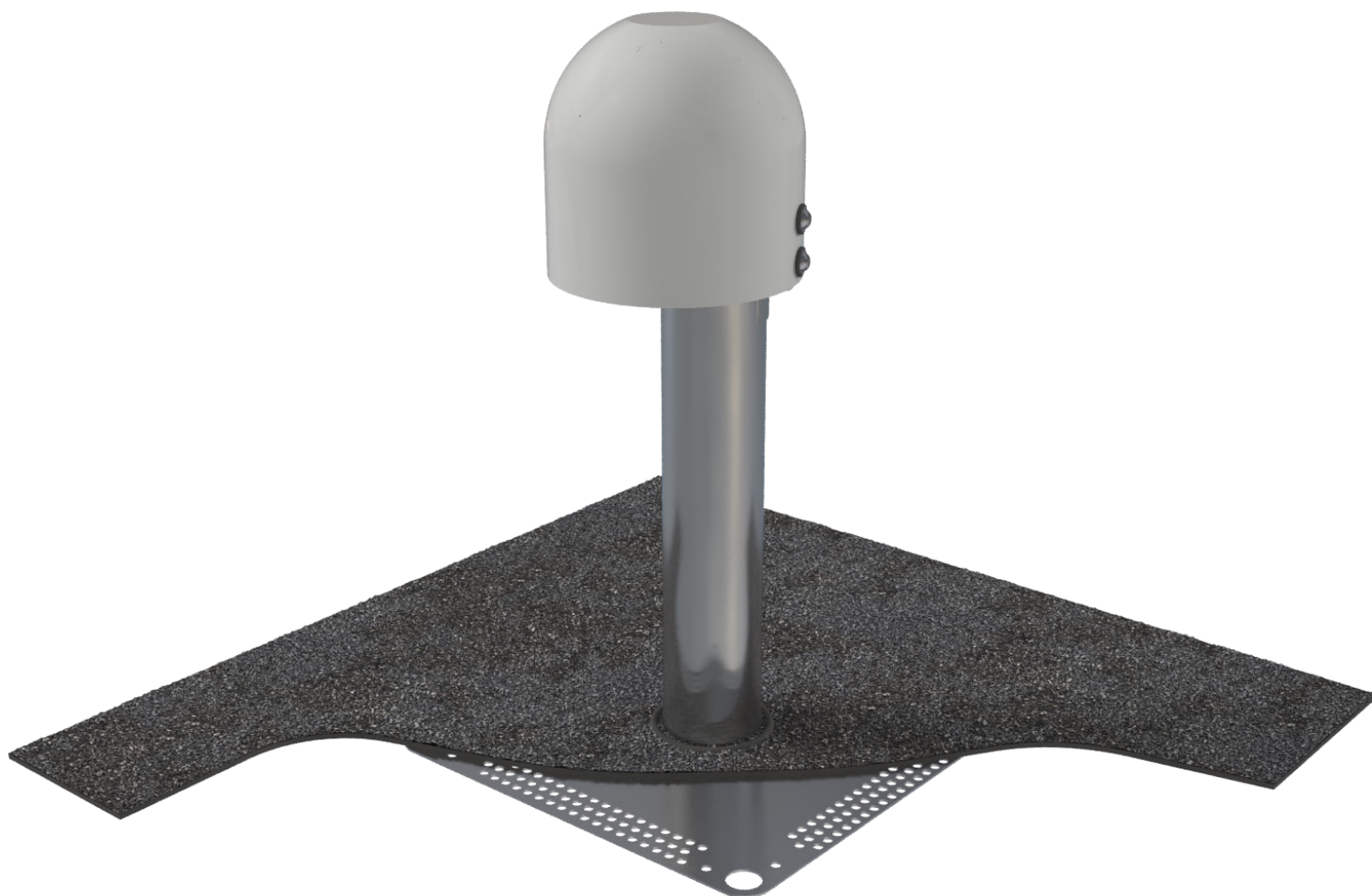
The RP50SS is available in one height. Increased height units can be manufactured. Minimum quantities and increased lead times apply.

To specify

Roofport RP50SS
Supplied by Nicholson. Tel 01763 295828 Email info@nicholsonsts.com

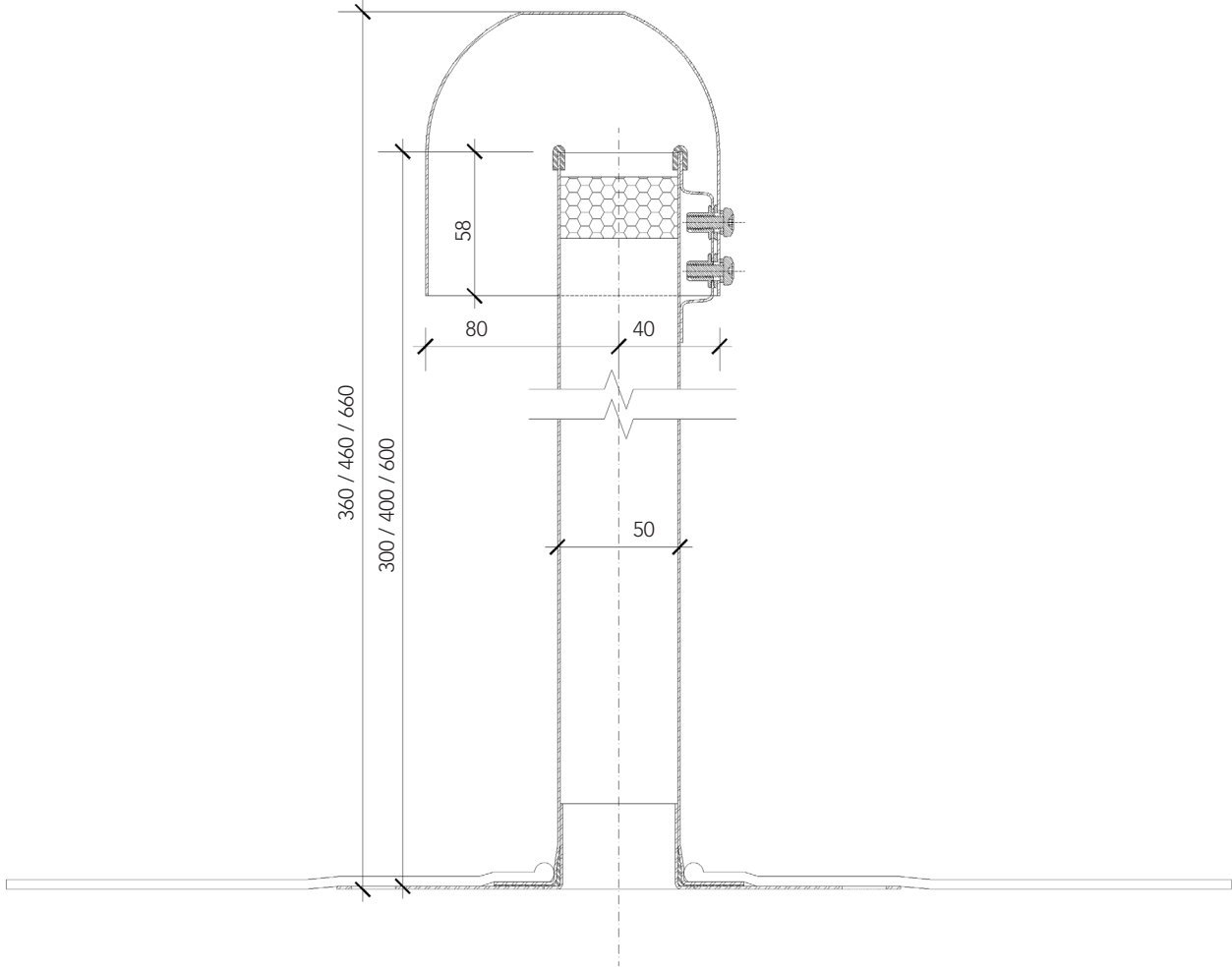
RP50SBS

Roof penetration fitting with SBS bitumen mid-sheet flange



Description	The RP50SBS has a 50mm diameter upstand and a removable weathering hood. The top of the upstand has a rubber gasket to protect the services as they exit the upstand. With an internal diameter of 48mm, this product can be used to provide entry/exit for smaller cables and services through the weathering layer.	
Typical uses	Electrical cables	
	IT cabling	
	PV cables	
	Lightning conductors	
For use with	The RP50SBS can be used on cold, warm and inverted roof constructions and is compatible with the following roof weathering materials; Bitumen systems, Hotmelt systems, Liquid applied systems.	
Materials	Base plate	stainless steel 230mm x 230mm x 0.5mm
	Flange	SBS torch-on mid-sheet
	Upstand	50mm Ø OD stainless steel x 300mm,400mm and 600mm high
	Hood	Aluminium, PPC RAL 7047
	Gasket	EPDM rubber
Flange material	SBS bitumen mid sheet 500mm x 500mm. Please note that this requires a cap sheet weathering overlay.	

RP50SBS
technical information



Installation & weathering

The RP50SBS can be fitted during or after the roof installation. The unit should be fixed through the base plate using either direct or thermally broken fixings. If fitted during the roof installation the torch-on mid-sheet flange is sealed to the surrounding roof mid-sheet. When the cap-sheet is applied to the roof, it should extend over the flange and be trimmed neatly around the pipe upstand. The roof system manufacturers recommendations and guidelines should be followed at all times.

Where the RP50SBS is installed on a completed roof, the mid-sheet flange should be sealed to the surrounding roof and then covered with a cap-sheet layer that matches that of the main roof area . For some roof systems the weathering of this product may need to be carried out by an approved contractor to ensure the roof warranty is not affected.

Cables or pipework should be sealed at the VCL level and the rubber gasket should be fitted at the top of the unit. The retaining screws that secure the hood should be tightened and checked on completion. For exposed locations we would recommend a suitable thread-locking agent is used.

Related products

The RP50SBS is available in varying heights for use in inverted roof situations. Available heights are 300mm, 400mm and 600mm.

To specify

Roofport RP50SBS	300mm high
Roofport RP50SBS-400	400mm high
Roofport RP50SBS-600	600mm high

Supplied by Nicholson. Tel 01763 295828 Email info@nicholsonsts.com

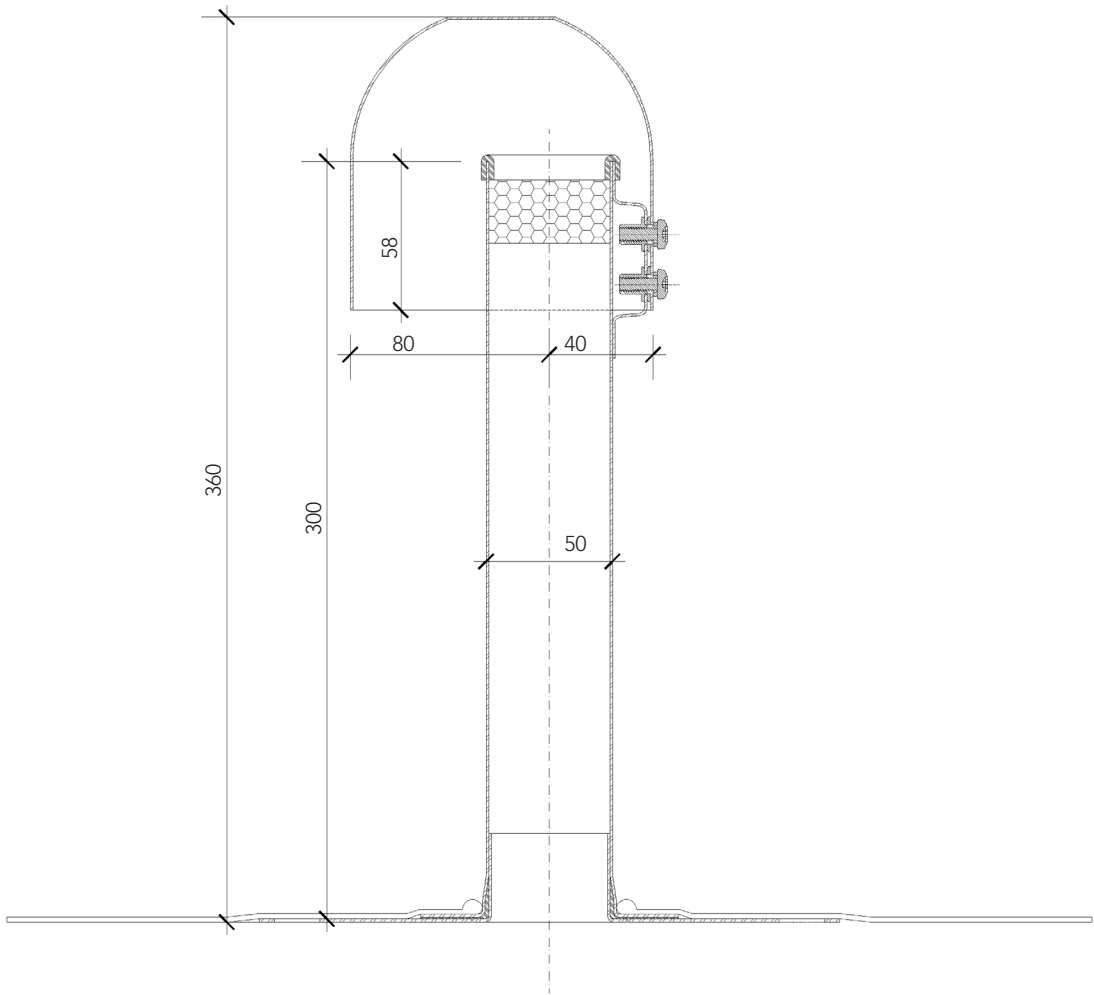
RP50SP

Roof penetration fitting with PVC single ply flange



Description	The RP50SP has a 50mm diameter upstand and a removable weathering hood. The top of the upstand has a rubber gasket to protect the services as they exit the upstand. With an internal diameter of 48mm, this product can be used to provide entry/exit for smaller cables and services through the weathering layer.	
Typical uses	Electrical cables	
	IT cabling	
	PV cables	
	Lightning conductors	
For use with	The RP50SP can be used on cold, warm and inverted roof constructions and is compatible with the following roof weathering materials; Single ply systems.	
Materials	Base plate	stainless steel 230mm x 230mm x 0.5mm
	Flange	PVC flange 400mm x 400mm
	Upstand	50mm Ø OD stainless steel x 300mm high
	Hood	Aluminium, PPC RAL 7047
	Gasket	EPDM rubber
Flange material	PVC single ply membrane available in either dark or light grey	

RP50SP
technical information



Installation & weathering

The RP50SP can be fitted during or after the roof installation. The unit should be fixed through the base plate using either direct or thermally broken fixings. The single ply flange should be heat welded to the field membrane in accordance with the roof system manufacturers recommendations and guidelines.

Cables or pipework should be sealed at the VCL level and the rubber gasket should be fitted at the top of the unit. The retaining screws that secure the hood should be tightened and checked on completion. For exposed locations we would recommend a suitable thread-locking agent is used.

Related products

The RP50SP is available with either a light grey or dark grey PVC flange material. Subject to minimum quantities and special order, the RP50SP can be supplied with specific single ply membranes.

To specify

Roofport RP50SP-LG	Light grey PVC flange membrane
Roofport RP50SP-DG	Dark grey PVC flange membrane

Supplied by Nicholson. Tel 01763 295828 Email info@nicholsonsts.com

RP110SS

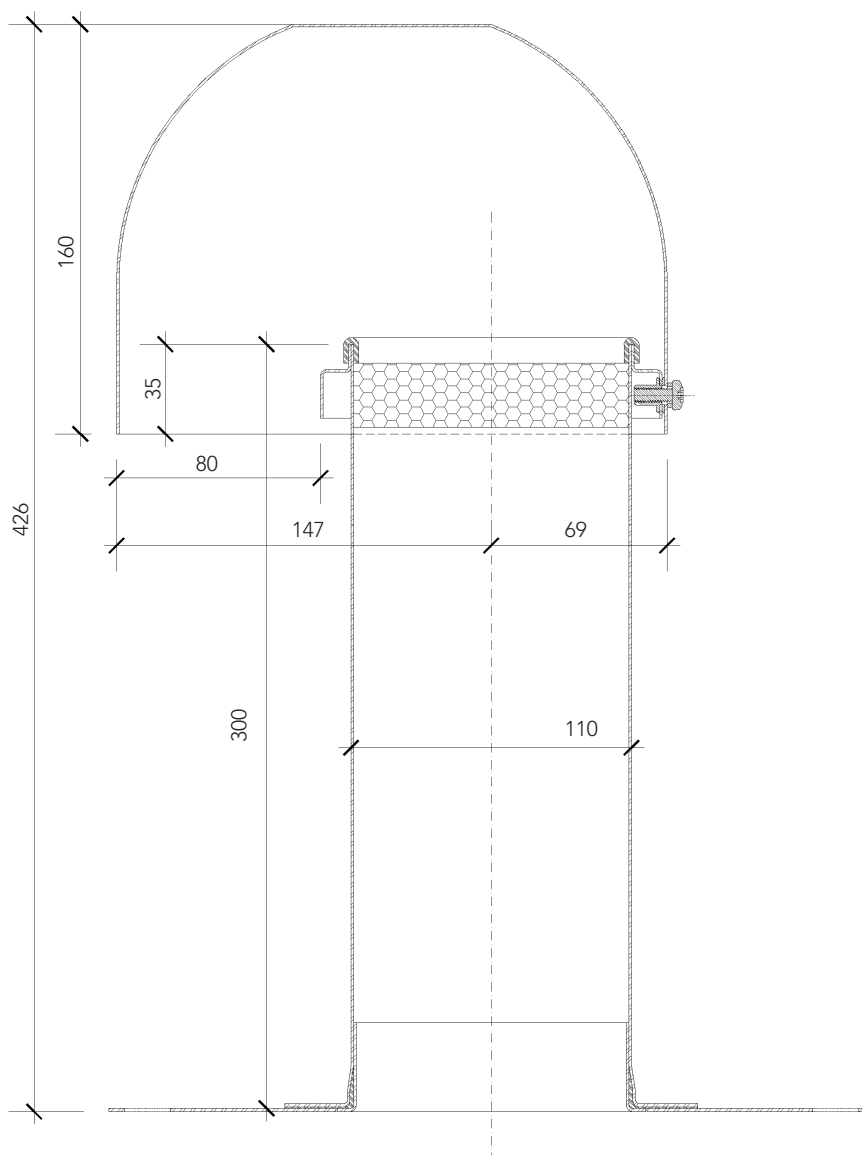
Roof penetration fitting with stainless steel flange



Description	The RP110SS has a 110mm diameter upstand and a removable weathering hood. The top of the upstand has a closed cell foam filler piece to protect the services as they exit the upstand and stop insects and small animals from entering the roof void. With an internal diameter of 108mm, this product can be used to provide entry/exit for larger cables and services through the weathering layer.	
Typical uses	Flexible aircon pipework	
	Electrical cables	
	IT cabling	
	PV cables	
	Lightning conductors	
For use with	The RP110SS can be used on cold and warm roof constructions and is compatible with the following roof weathering materials; Asphalt, Bitumen systems, GRP, Liquid applied systems, Single ply systems, Lead roofing, Hard metal roofing.	
Material	Base plate	stainless steel 300mm x 300mm x 0.5mm
	Upstand	110mm Ø OD stainless steel x 300mm high
	Hood	Aluminium, PPC RAL 7047
	Foam Filler	EPDM rubber closed cell foam
Flange material	Stainless steel – requires a weathering seal to the pipe upstand	

RP110SS

technical information



Installation & weathering

The RP110SS can be fitted during or after the roof installation. The unit should be fixed through the base plate using either direct or thermally broken fixings. A weathering to the upstand should be made in the same material as the main roof area. This flashing should extend 150mm above the roof surface and be in accordance with the roof system manufacturers recommendations. For some roof systems the weathering of this product may need to be carried out by an approved contractor to ensure the roof warranty is not affected.

Cables or pipework should be sealed at the VCL level and the foam filler piece should be installed at the top of the unit. The retaining screws that secure the hood should be tightened and checked on completion. For exposed locations we would recommend a suitable thread-locking agent is used.

Related products

The RP110SS is available in one height. Increased height units can be manufactured. Minimum quantities and increased lead times apply.

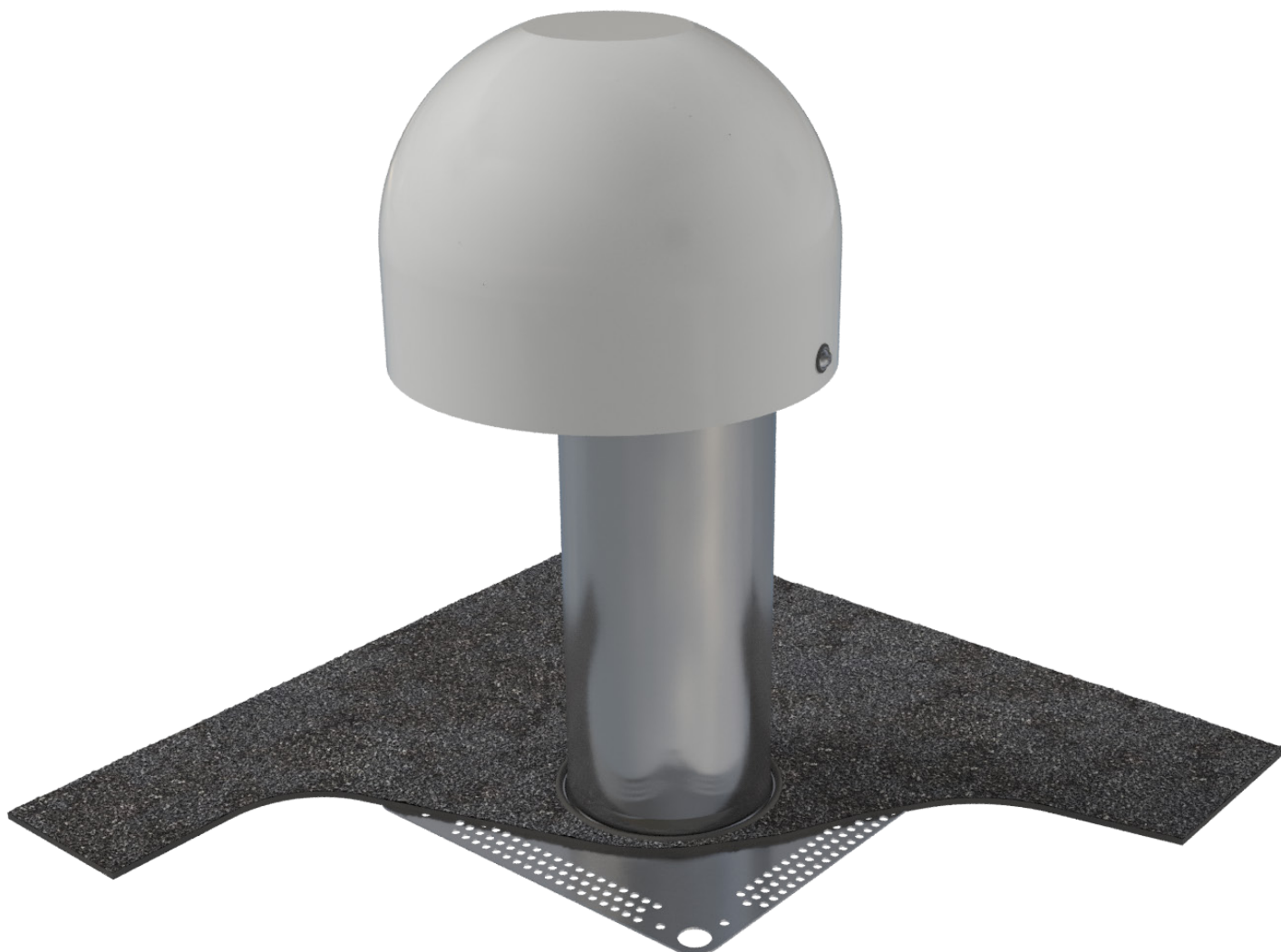
To specify

Roofport RP110SS

Supplied by Nicholson. Tel 01763 295828 Email info@nicholsonsts.com

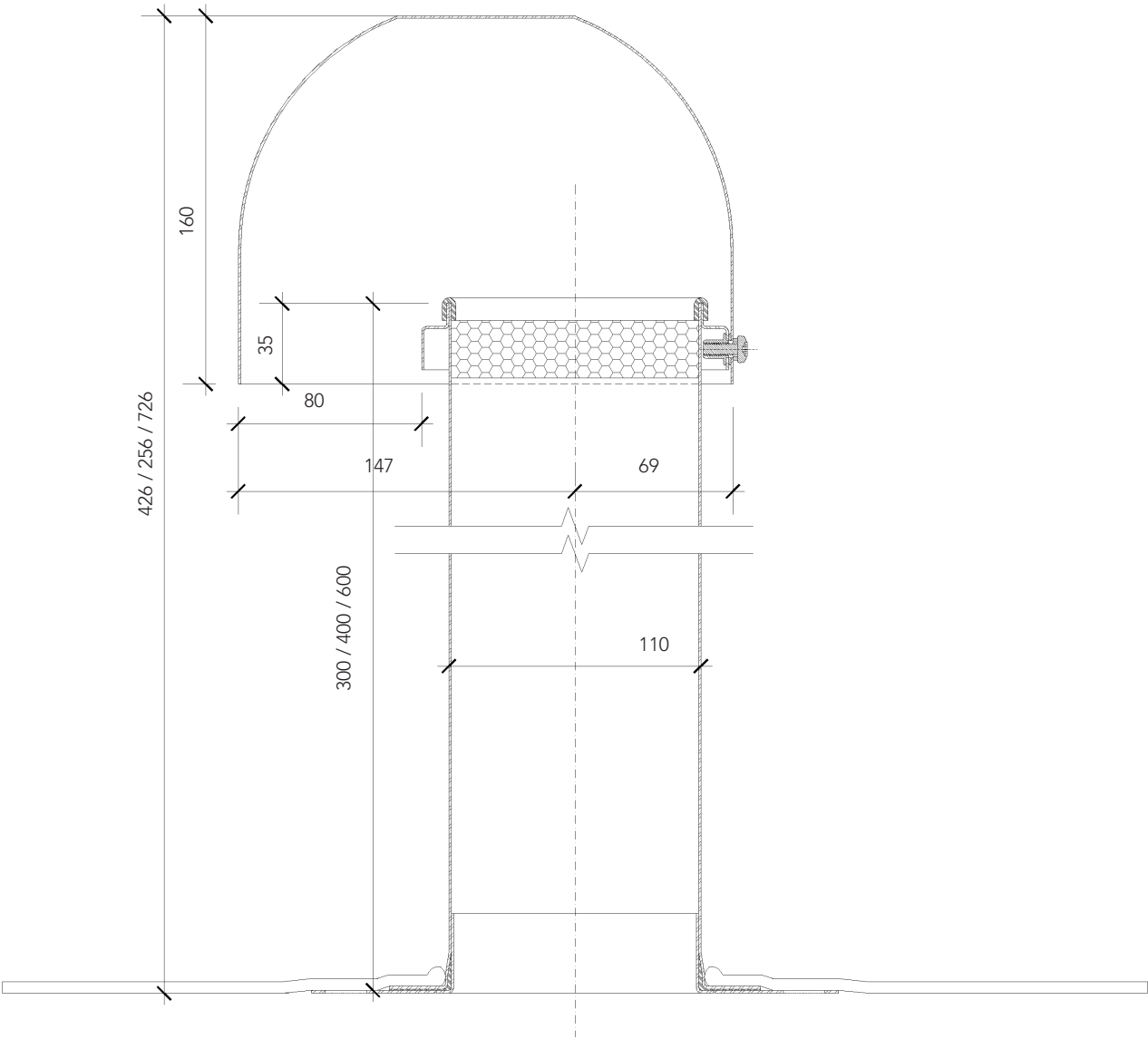
RP110SBS

Roof penetration fitting with SBS bitumen mid-sheet flange



Description	The RP110SBS has a 110mm diameter upstand and a removable weathering hood. The top of the upstand has a closed cell foam filler piece to protect the services as they exit the upstand and stop insects and small animals from entering the roof void. With an internal diameter of 108mm, this product can be used to provide entry/exit for smaller cables and services through the weathering layer.	
Typical uses	Flexible aircon pipework	
	Electrical cables	
	IT cabling	
	PV cables	
	Lightning conductors	
For use with	The RP110SBS can be used on cold, warm and inverted roof constructions and is compatible with the following roof weathering materials; Bitumen systems, Hotmelt systems, Liquid applied systems.	
Materials	Base plate	stainless steel 230mm x 230mm x 0.5mm
	Flange	SBS torch-on mid-sheet 500mm x 500mm
	Upstand	110mm Ø OD stainless steel x 300mm, 400mm and 600mm high
	Hood	Aluminium, PPC RAL 7047
	Foam filler	EPDM rubber closed cell foam
Flange material	SBS bitumen mid sheet 500mm x 500mm. Please note that this requires a cap sheet weathering overlay	

RP110SBS
technical information



Installation & weathering	<p>The RP110SBS can be fitted during or after the roof installation. The unit should be fixed through the base plate using either direct or thermally broken fixings. If fitted during the roof installation, the torch-on mid-sheet flange is sealed to the surrounding roof mid-sheet. When the cap-sheet is applied to the roof, it should extend over the flange and be trimmed neatly around the pipe upstand. The roof system manufacturers recommendations and guidelines should be followed at all times.</p> <p>Where the RP110SBS is installed on a completed roof, the mid-sheet flange should be sealed to the surrounding roof and then covered with a cap-sheet layer that matches that of the main roof area. For some roof systems the weathering of this product may need to be carried out by an approved contractor to ensure the roof warranty is not affected.</p> <p>Cables or pipework should be sealed at the VCL level and the foam filler piece should be fitted at the top of the unit. The retaining screws that secure the hood should be tightened and checked on completion. For exposed locations we would recommend a suitable thread-locking agent is used.</p>						
Related products	<p>The RP110SBS is available in varying heights for use in inverted roof situations. Available heights are 300mm, 400mm and 600mm.</p>						
To specify	<table><tr><td>Roofport RP110SBS</td><td>300mm high</td></tr><tr><td>Roofport RP110SBS-400</td><td>400mm high</td></tr><tr><td>Roofport RP110SBS-600</td><td>600mm high</td></tr></table> <p>Supplied by Nicholson. Tel 01763 295828 Email info@nicholsonsts.com</p>	Roofport RP110SBS	300mm high	Roofport RP110SBS-400	400mm high	Roofport RP110SBS-600	600mm high
Roofport RP110SBS	300mm high						
Roofport RP110SBS-400	400mm high						
Roofport RP110SBS-600	600mm high						

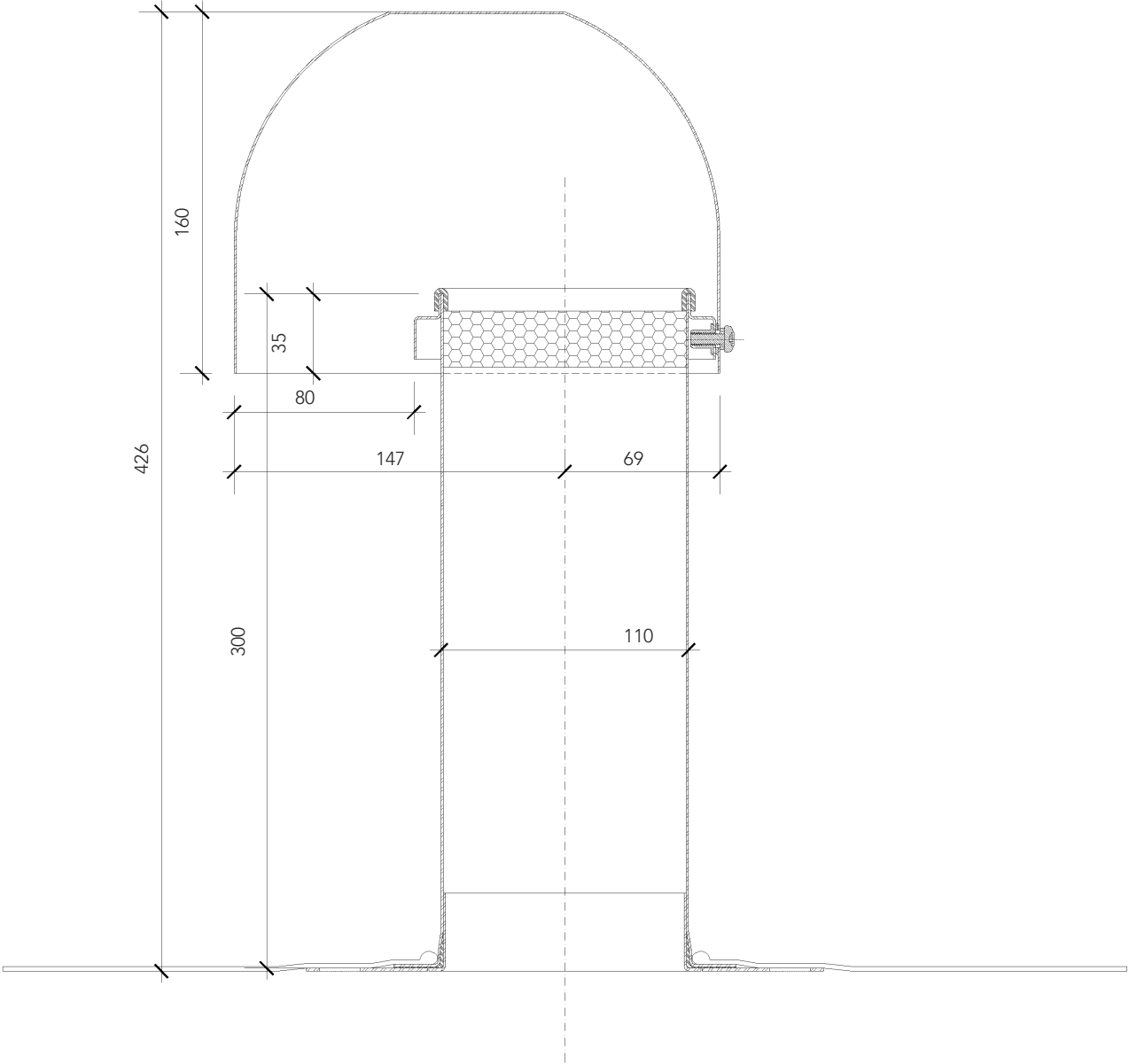
RP110SP

Roof penetration fitting with PVC single ply flange



Description	The RP110SP has a 110mm diameter upstand and a removable weathering hood. The top of the upstand has a closed cell foam filler piece to protect the services as they exit the upstand and stop insects and small animals from entering the roof void. With an internal diameter of 108mm, this product can be used to provide entry/exit for larger cables and services through the weathering layer.	
Typical uses	Flexible aircon pipework	
	Electrical cables	
	IT cabling	
	PV cables	
	Lightning conductors	
For use with	The RP110SP can be used on cold, warm and inverted roof constructions and is compatible with the following roof weathering materials; Single ply systems.	
Materials	Base plate	stainless steel 230mm x 230mm x 0.5mm
	Flange	PVC flange 400mm x 400mm
	Upstand	110mm Ø OD stainless steel x 300mm high
	Hood	Aluminium, PPC RAL 7047
	Foam filler	EPDM rubber closed cell foam
Flange material	PVC single ply membrane available in either dark or light grey	

RP110SP
technical information



Installation & weathering

The RP110SP can be fitted during or after the roof installation. The unit should be fixed through the base plate using either direct or thermally broken fixings. The single ply flange should be heat welded to the field membrane in accordance with the roof system manufacturers recommendations and guidelines.

Cables or pipework should be sealed at the VCL level and the foam filler piece should be installed at the top of the unit. The retaining screws that secure the hood should be tightened and checked on completion. For exposed locations we would recommend a suitable thread-locking agent is used.

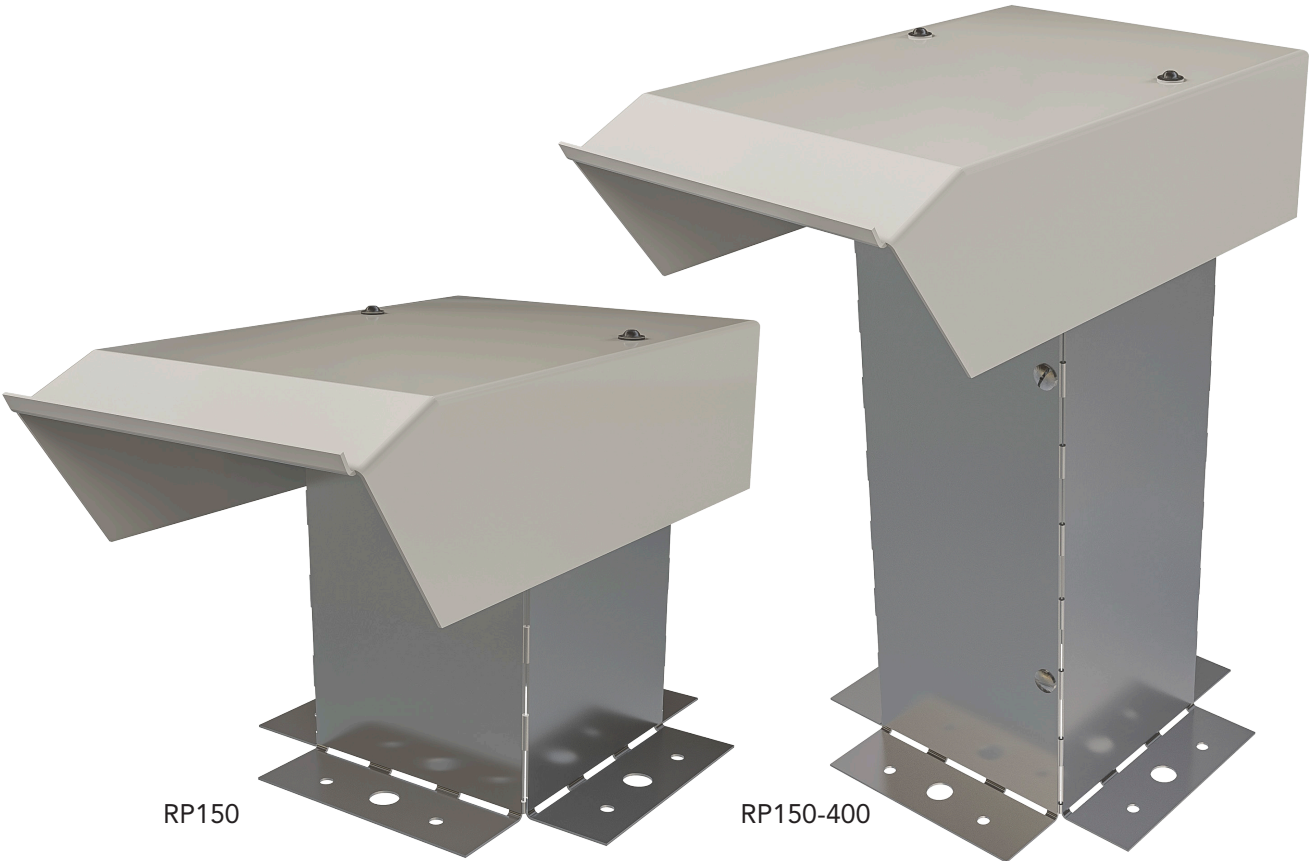
Related products

The RP110SP is available with either a light grey or dark grey PVC flange material. Subject to minimum quantities and special order, the RP110SP can be supplied with specific single ply membranes.

To specify

Roofport RP110SP-LG	Light grey PVC flange membrane
Roofport RP110SP-DG	Dark grey PVC flange membrane
Supplied by Nicholson. Tel 01763 295828 Email info@nicholsonsts.com	

RP150 and RP150-400
Roof penetration fitting

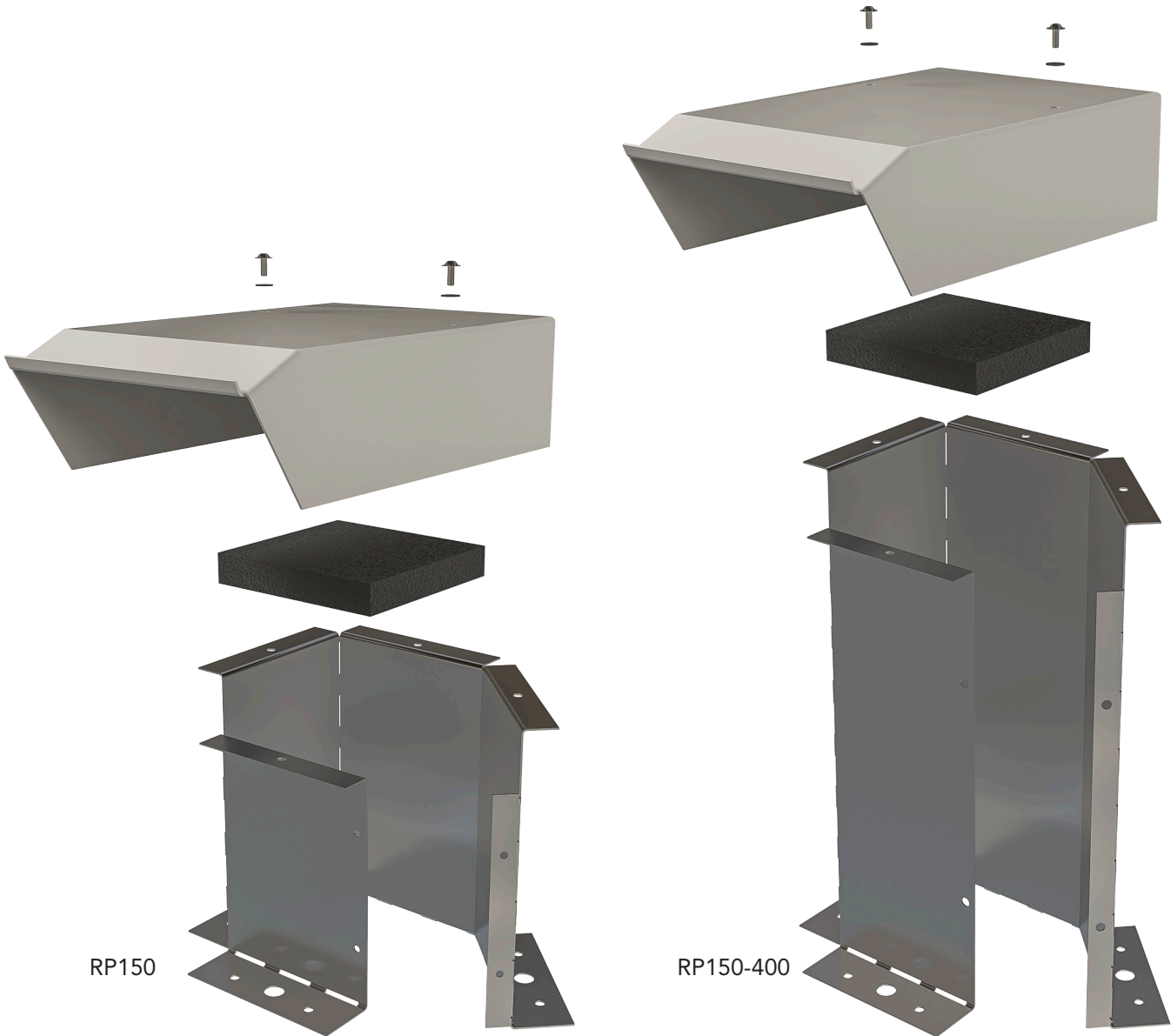


RP150

RP150-400

Description	The RP150 Roof Penetration fitting has a 150mm square upstand and can be installed around existing services due to its split design. This feature can avoid the decommissioning and recommissioning of some roof plant when the roof is being re-covered. This product can be used to provide entry/exit for larger cables and services through the weathering layer and is available in two different heights.	
Typical uses	Flexible aircon pipework	
	Electrical cables	
	IT cabling	
	PV cables	
	Lightning conductors	
For use with	The RP150 can be used on cold and warm roof constructions and is compatible with the following roof weathering materials; Asphalt, Bitumen systems, GRP, Liquid applied systems, Single ply systems, Lead roofing, Hard metal roofing.	
Materials	Upstand	1.5mm alumium/PVC coated steel
	Hood	Aluminium, PPC RAL 7047

RP150 and RP150-400
Roof penetration fitting



RP150

RP150-400

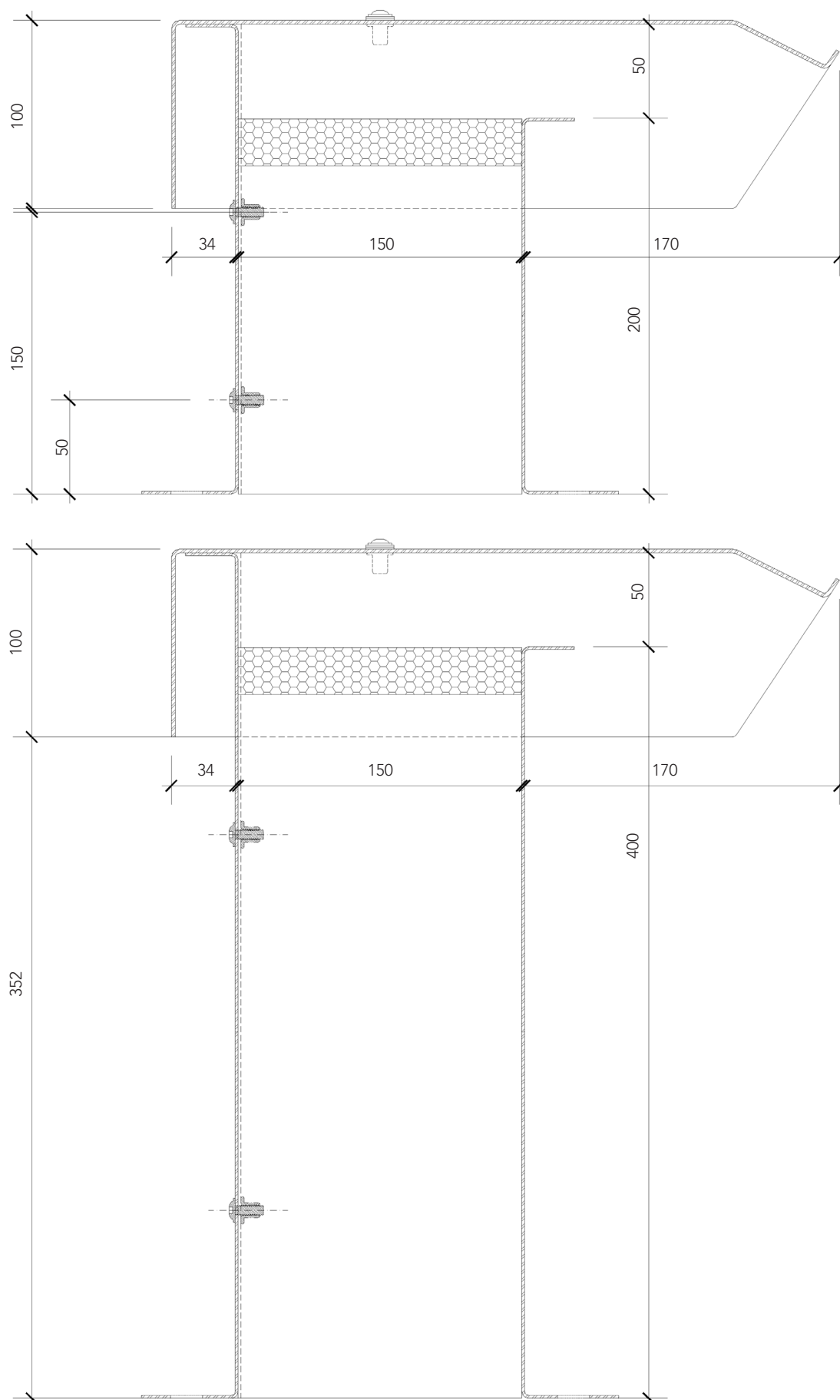
Installation & weathering

The RP150 can be installed during or after the roof covering is being fitted. The unit should be fixed through the base plate using either direct or thermally broken fixings. The hood section is best removed during fitting. A weathering to the upstand should be made in the same material as the main roof area. This flashing should extend to the top of the aluminium upstand. The weathering should be in accordance with the roof system manufacturers recommendations. For some roof systems the weathering of this product may need to be carried out by an approved contractor to ensure the roof warranty is not affected.

Cables or pipework should be sealed at the VCL level and the foam bung should be installed at the top of the unit. The hood should be replaced and the retaining screws that secure the hood should be tightened and checked on completion. For exposed locations we would recommend a suitable thread-locking agent is used.

Related products	The RP150 is available in two heights of 200mm and 400mm. Increased height units can be manufactured. Minimum quantities and increased lead times apply.	
To specify	Roofport RP150	200mm high aluminium upstand
	Roofport RP150-PVC	200mm high PVC coated steel upstand
	Roofport RP150-400	400mm high upstand
Supplied by Nicholson. Tel 01763 295828 Email info@nicholsonsts.com		

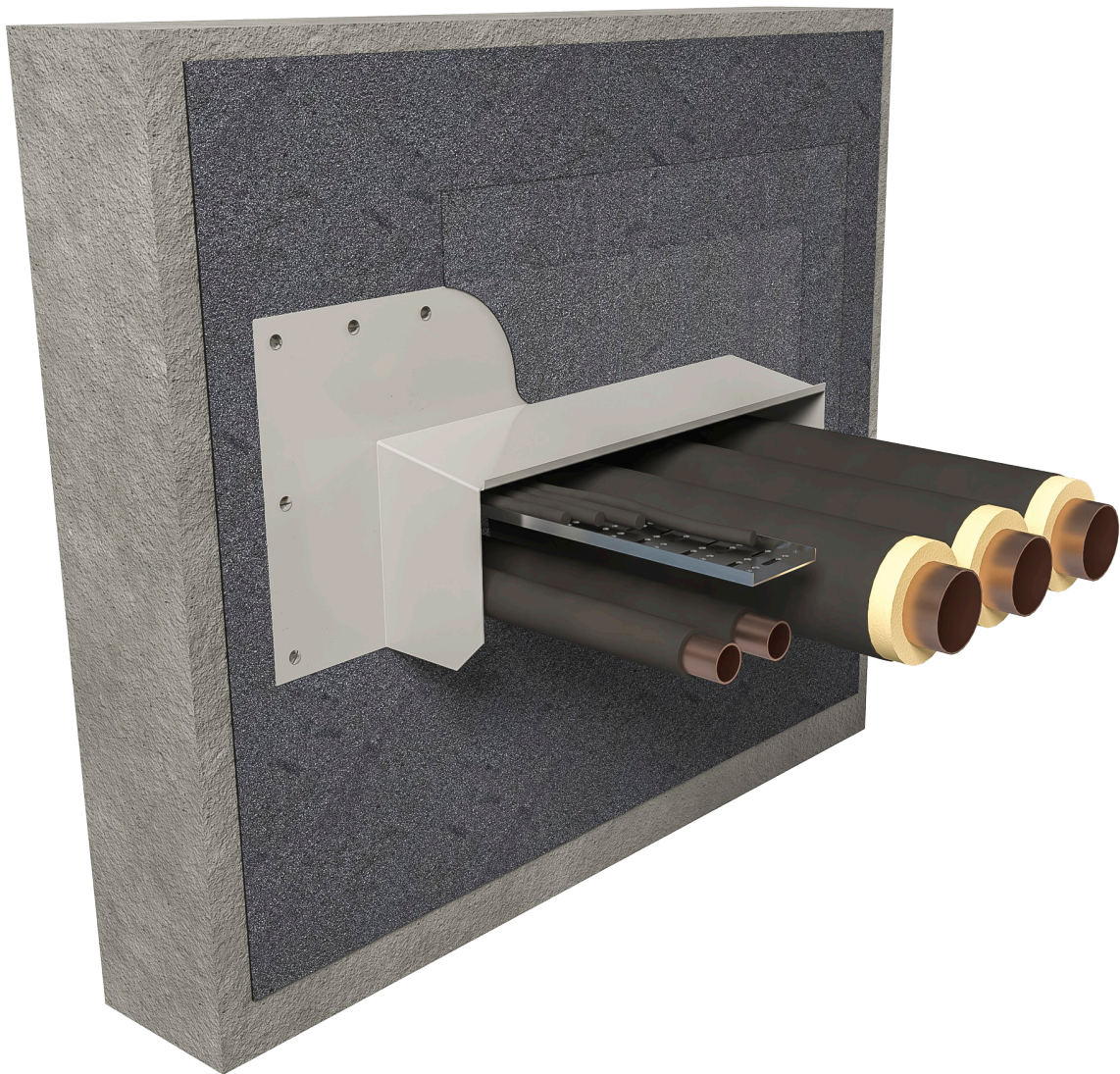
RP150 and RP150-400 technical information



ROOFPORT™ RPWH weathering hoods

The Roofport RPWH range of fittings provide a weatherproof entry/exit point for pipes and cables as they pass through a weathered vertical surface. The weathering hood provides cover to keep the elements away from the critical point where services exit the wall.

The RPWH range comes in four different widths and can be used with virtually all roof covering materials. They all have a 150mm wide flange to weather the roofing membrane to.



RPWH-150 Weathering hood 150mm



Description	The Roofport RPWH-150 provides a weathering hood for horizontal services at the point they enter/exit a vertical weathered surface.
Typical uses	Pipework up to 150mm Ø
	Ductwork up to 150mm Ø
	Cable trays
	Other services
For use with	The RPWH-150 can be used on cold and warm constructions and is compatible with the following roof weathering materials; Asphalt, Bitumen systems, GRP, Liquid applied systems, Single ply systems, Lead roofing, Hard metal roofing.
Materials	2.0mm aluminium, PPC RAL 7047
Installation & weathering	<p>The RPWH-150 can be fitted during or after the roof installation. The unit should be fixed through the flange plate using suitable fixings. A weathering to the flange should be made in the same material as the main roof area. This flashing should extend to cover the flange and should be in accordance with the roof system manufacturers recommendations. For some roof systems the weathering of this product may need to be carried out by an approved contractor to ensure the roof warranty is not affected.</p> <p>Cables or pipework should be sealed at the VCL level. It is important that the services are sealed to the waterproofing layer prior to fitting the RPWH-150.</p>
Related products	The RPWH hoods can be supplied in bespoke sizes and powder coated to any RAL colour.
To specify	Roofport RPWH-150, 150mm x 150mm penetration area Supplied by Nicholson. Tel 01763 295828 Email info@nicholsonsts.com

RPWH-300 Weathering hood 300mm



Description	The Roofport RPWH-300 provides a weathering hood for horizontal services at the point they enter/exit a vertical weathered surface.
Typical uses	Pipework up to 150mm Ø
	Ductwork up to 150mm Ø
	Cable trays
	Other services
For use with	The RPWH-300 can be used on cold and warm constructions and is compatible with the following roof weathering materials; Asphalt, Bitumen systems, GRP, Liquid applied systems, Single ply systems, Lead roofing, Hard metal roofing.
Materials	2.0mm aluminium, PPC RAL 7047
Installation & weathering	<p>The RPWH-300 can be fitted during or after the roof installation. The unit should be fixed through the flange plate using suitable fixings. A weathering to the flange should be made in the same material as the main roof area. This flashing should extend to cover the flange and should be in accordance with the roof system manufacturers recommendations. For some roof systems the weathering of this product may need to be carried out by an approved contractor to ensure the roof warranty is not affected.</p> <p>Cables or pipework should be sealed at the VCL level. It is important that the services are sealed to the waterproofing layer prior to fitting the RPWH-300</p>
Related products	The RPWH hoods can be supplied in bespoke sizes and powder coated to any RAL colour.
To specify	Roofport RPWH-300, 150mm x 300mm penetration area Supplied by Nicholson. Tel 01763 295828 Email info@nicholsonsts.com

RPWH-450 Weathering hood 450mm



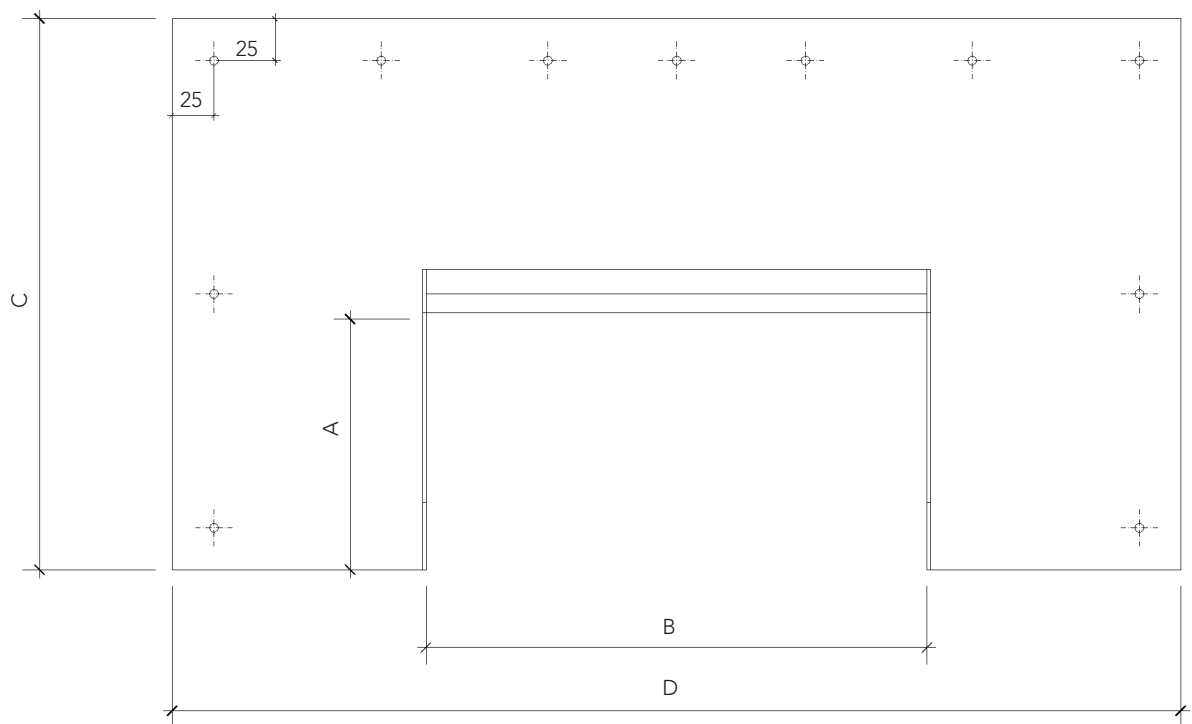
Description	The Roofport RPWH-450 provides a weathering hood for horizontal services at the point they enter/exit a vertical weathered surface.
Typical uses	Pipework up to 180mm Ø
	Ductwork up to 180mm Ø
	Cable trays
	Other services
For use with	The RPWH-450 can be used on cold and warm constructions and is compatible with the following roof weathering materials; Asphalt, Bitumen systems, GRP, Liquid applied systems, Single ply systems, Lead roofing, Hard metal roofing
Materials	2.0mm aluminium, PPC RAL 7047
Installation & weathering	<p>The RPWH-450 can be fitted during or after the roof installation. The unit should be fixed through the flange plate using suitable fixings. A weathering to the flange should be made in the same material as the main roof area. This flashing should extend to cover the flange and should be in accordance with the roof system manufacturers recommendations. For some roof systems the weathering of this product may need to be carried out by an approved contractor to ensure the roof warranty is not affected.</p> <p>Cables or pipework should be sealed at the VCL level. It is important that the services are sealed to the waterproofing layer prior to fitting the RPWH-450</p>
Related products	The WH hoods can be supplied in bespoke sizes and powder coated to any RAL colour.
To specify	<p>Roofport RPWH-450, 200mm x 450mm penetration area</p> <p>Supplied by Nicholson. Tel 01763 295828 Email info@nicholsonsts.com</p>

RPWH-600 Weathering hood 600mm



Description	The Roofport RPWH-600 provides a weathering hood for horizontal services at the point they enter/exit a vertical weathered surface.
Typical uses	Pipework up to 180mm Ø
	Ductwork up to 180mm Ø
	Cable trays
	Other services
For use with	The RPWH-600 can be used on cold and warm constructions and is compatible with the following roof weathering materials; Asphalt, Bitumen systems, GRP, Liquid applied systems, Single ply systems, Lead roofing, Hard metal roofing
Materials	2.0mm aluminium, PPC RAL 7047
Installation & weathering	<p>The RPWH-600 can be fitted during or after the roof installation. The unit should be fixed through the flange plate using suitable fixings. A weathering to the flange should be made in the same material as the main roof area. This flashing should extend to cover the flange and should be in accordance with the roof system manufacturers recommendations. For some roof systems the weathering of this product may need to be carried out by an approved contractor to ensure the roof warranty is not affected.</p> <p>Cables or pipework should be sealed at the VCL level. It is important that the services are sealed to the waterproofing layer prior to fitting the RPWH-600.</p>
Related products	The RPWH hoods can be supplied in bespoke sizes and powder coated to any RAL colour.
To specify	<p>Roofport RPWH-600, 200mm x 600mm penetration area</p> <p>Supplied by Nicholson. Tel 01763 295828 Email info@nicholsonsts.com</p>

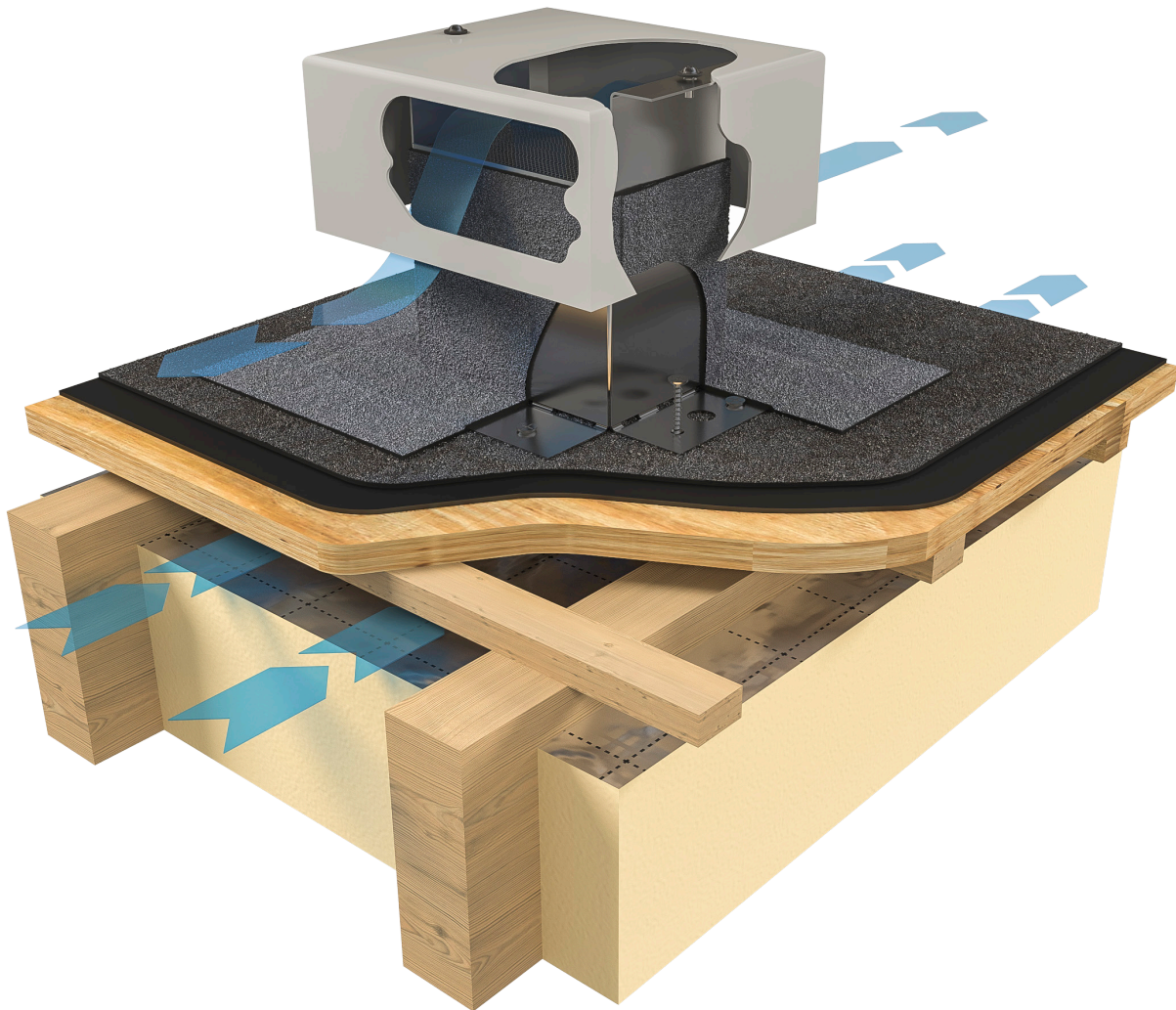
Weathering hoods
technical information



	A (mm)	B (mm)	C (mm)	D (mm)
RPWH-150	150	150	330	454
RPWH-300	150	300	330	604
RPWH-400	200	450	380	754
RPWH-600	200	600	380	904

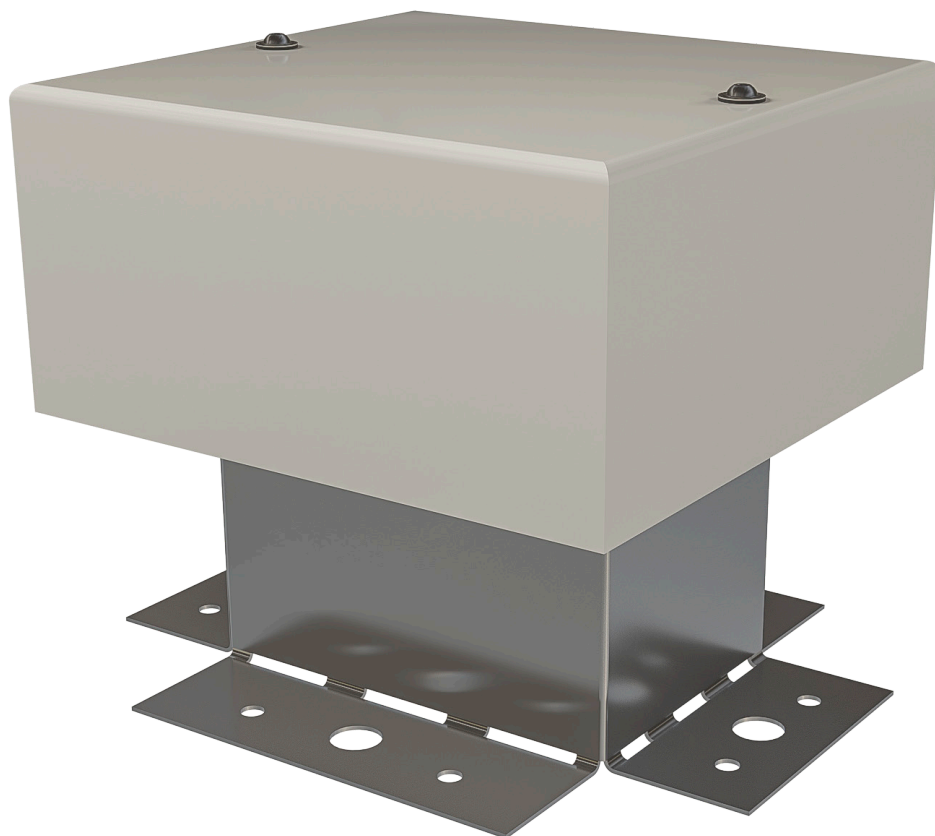
ROOFPORT™ RPV roof ventilators

The RPV range provides large capacity roof void point ventilators with an integral flyscreen mesh for use with virtually all roof coverings. These ventilators can be installed at the time of the roof covering or retrospectively to help achieve the necessary ventilation required by BS 5250.



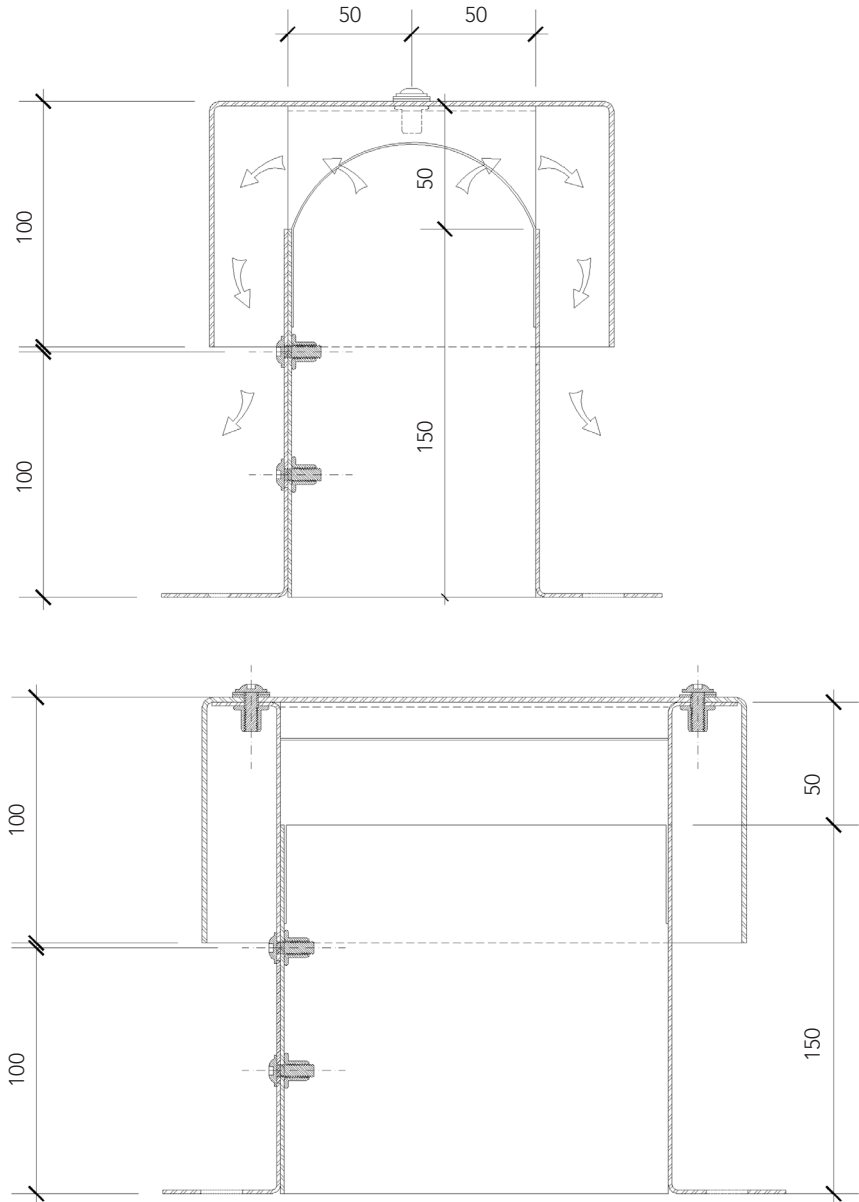
RPV15 and RPV15-PVC

Roof ventilator 15,000mm²



Description	The RPV15 is a large capacity roof void point ventilator with an integral flyscreen mesh. This ventilator can be used to help meet the requirements of BS 5250.	
Ventilation	The RPV15 provides a ventilation area of 15,000 mm ² . When installed at 600mm centres it will provide the equivalent of 25mm continuous ventilation	
For use with	The RPV15 is compatible with the following roof weathering materials; Membrane, Liquid applied, GRP and Hard Metal roofing	
Materials	Upstand	1.5mm aluminium/PVC coated steel
	Hood	2.0mm aluminium PPC RAL 7047
	Insect screen	vinyl coated GRP mesh

RPV15 and RPV15-PVC technical information



Installation & weathering

The RPV15 can be installed during or after the roof covering has been fitted. The powder-coated hood section must first be removed by releasing the two self-sealing screws to the top of the hood. The base section should be fixed to the roof substrate with appropriate fixing screws. The roof covering system should be taken up the vertical surfaces of the base section in accordance with any applicable manufacturers guidelines. For some roof systems the weathering of this product may need to be carried out by an approved contractor to ensure the roof warranty is not affected.

The hood section can then be replaced and the retaining screws that secure the hood should be tightened and checked on completion. For exposed locations we would recommend a suitable thread-locking agent is used.

Maintenance

The ventilator should be visually checked periodically to ensure that no debris has become trapped within the hood section reducing the ventilation capacity.

Related products

The RPV weathering hoods can be supplied in bespoke sizes and powder coated to any RAL colour.

To specify

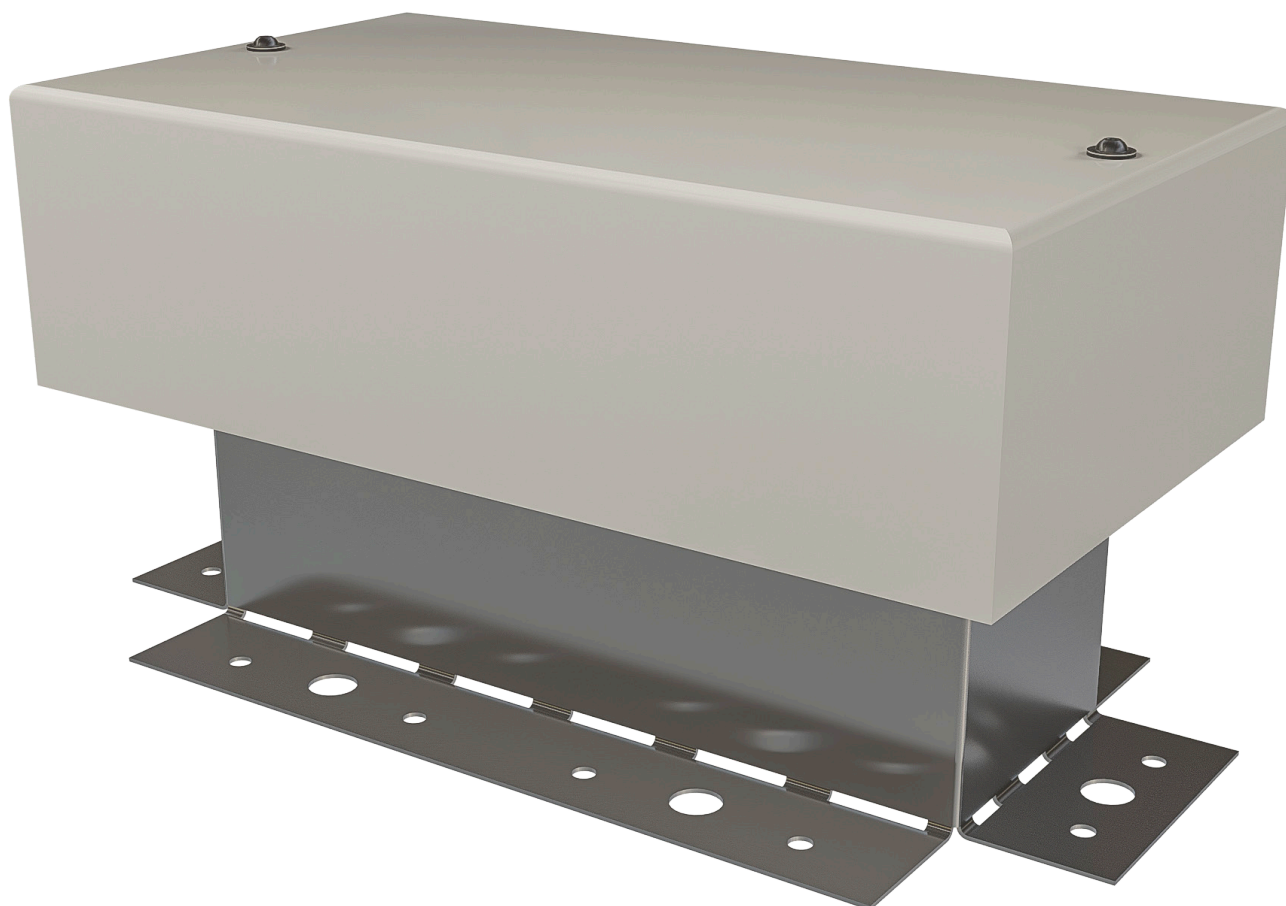
Roofport RPV15

Roofport RPV15-PVC

Supplied by Nicholson. Tel 01763 295828 Email info@nicholsonsts.com

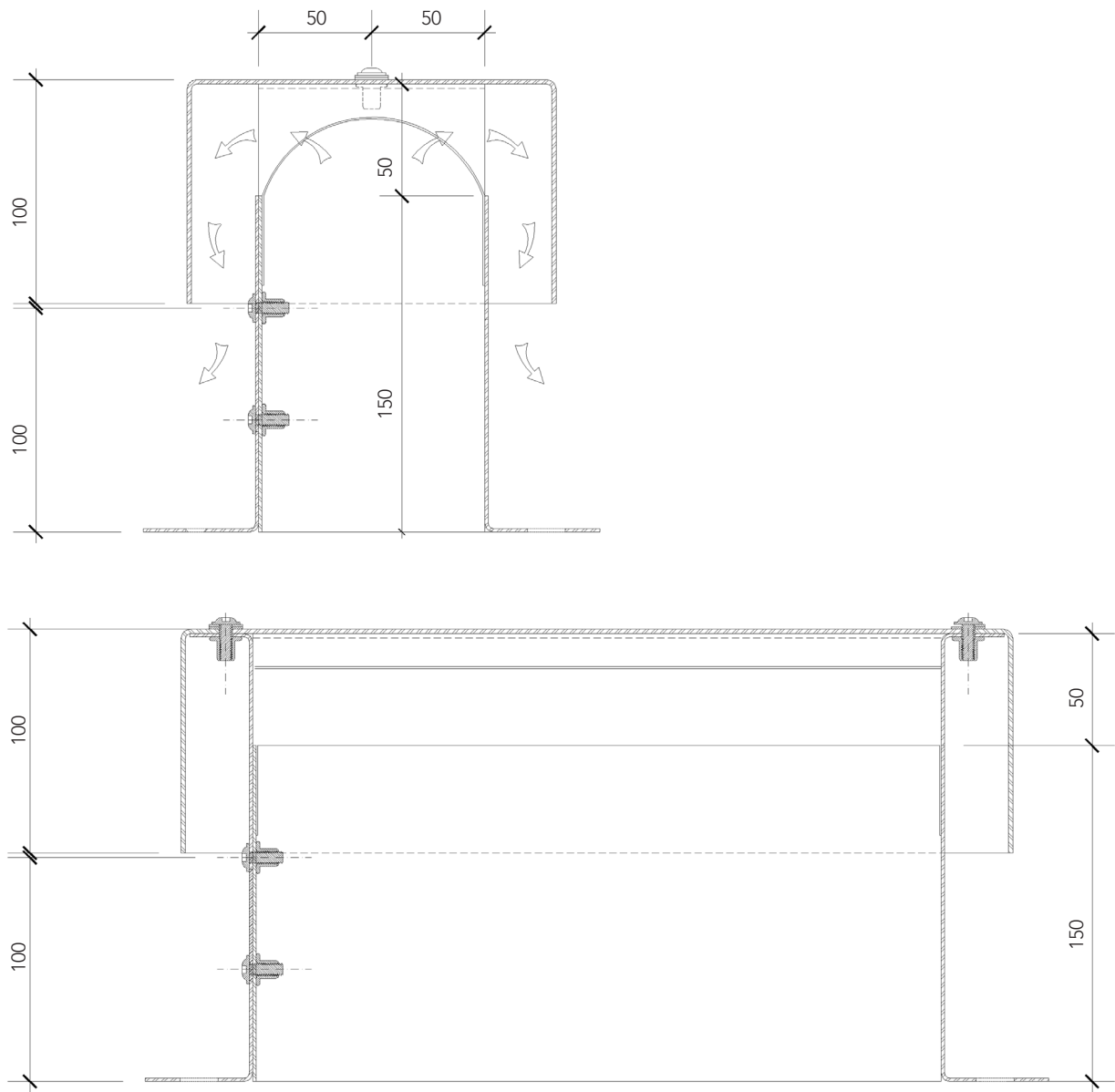
RPV30 and RPV30-PVC

Roof ventilator 30,000mm²



Description	The RPV30 is a large capacity roof void point ventilator with an integral flyscreen mesh. This ventilator can be used to help meet the requirements of BS 5250	
Ventilation	The RPV30 provides a ventilation area of 30,000 mm ² . When installed at 1200mm centres it will provide the equivalent of 25mm continuous ventilation	
For use with	The RPV15 is compatible with the following roof weathering materials; Membrane, Liquid applied, GRP and Hard Metal roofing	
Materials	Upstand	1.5mm aluminium/PVC coated steel
	Hood	2.0mm aluminium PPC RAL 7047
	Insect screen	vinyl coated GRP mesh

RPV30 and RPV30-PVC technical information



Installation & weathering	<p>The RPV30 can be installed during or after the roof covering has been fitted. The powder-coated hood section must first be removed by releasing the two self-sealing screws to the top of the hood. The base section should be fixed to the roof substrate with appropriate fixing screws. The roof covering system should be taken up the vertical surfaces of the base section in accordance with any applicable manufacturers guidelines. For some roof systems the weathering of this product may need to be carried out by an approved contractor to ensure the roof warranty is not affected.</p> <p>The hood section can then be replaced and the retaining screws that secure the hood should be tightened and checked on completion. For exposed locations we would recommend a suitable thread-locking agent is used.</p>
Maintenance	<p>The ventilator should be visually checked periodically to ensure that no debris has become trapped within the hood section reducing the ventilation capacity.</p>
Related products	<p>The RPV weathering hoods can be supplied in bespoke sizes and powder coated to any RAL colour.</p>
To specify	<p>Roofport RPV30</p> <p>Roofport RPV30-PVC</p> <p>Supplied by Nicholson. Tel 01763 295828 Email info@nicholsonsts.com</p>

Bespoke products

We hope that you have found a solution to your requirement in this brochure. However, we are well aware that one size, or a selection of sizes, never fits all situations. Should you still require assistance with weathering a service penetration, please do not hesitate to contact our Technical team using the contact details below.

Nicholson holds innovation as a central tenet of its company ethos and has a knowledgeable team who can design and manufacture one off and bespoke items. We can provide working drawings for approval and in many cases, a speedy turnaround from design to manufacture.

Contact our technical team;

Telephone 01763 295828

Email technical@nicholsonsts.com



Unit 13, Wireless Station Park, Chestnut Lane, Bassingbourn, SG8 5JH

t: 01763 295828
e: info@nicholsonsts.com
w: www.nicholsonsts.com