

Roofbox P-Series

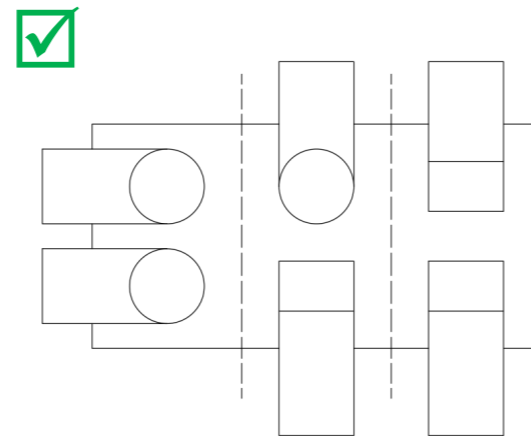
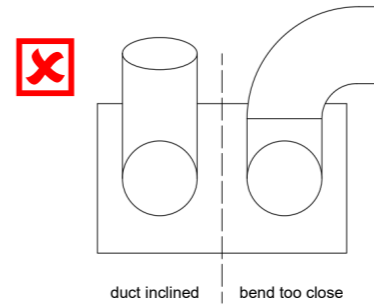
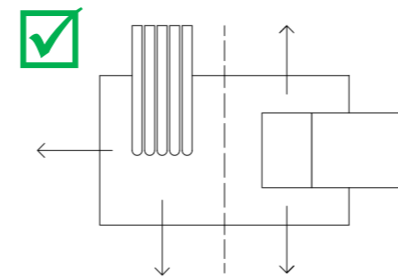
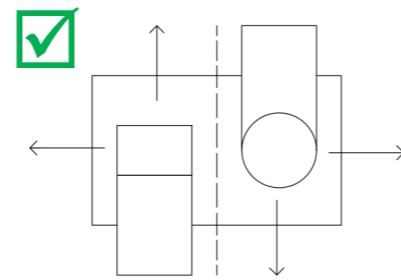
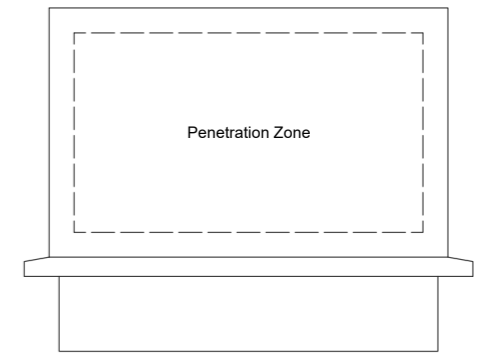
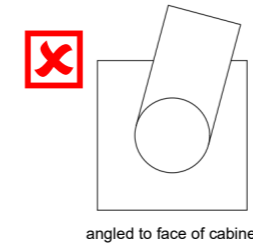
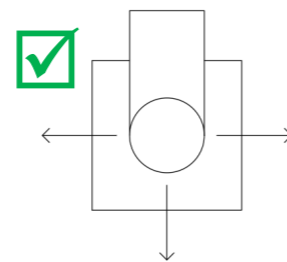
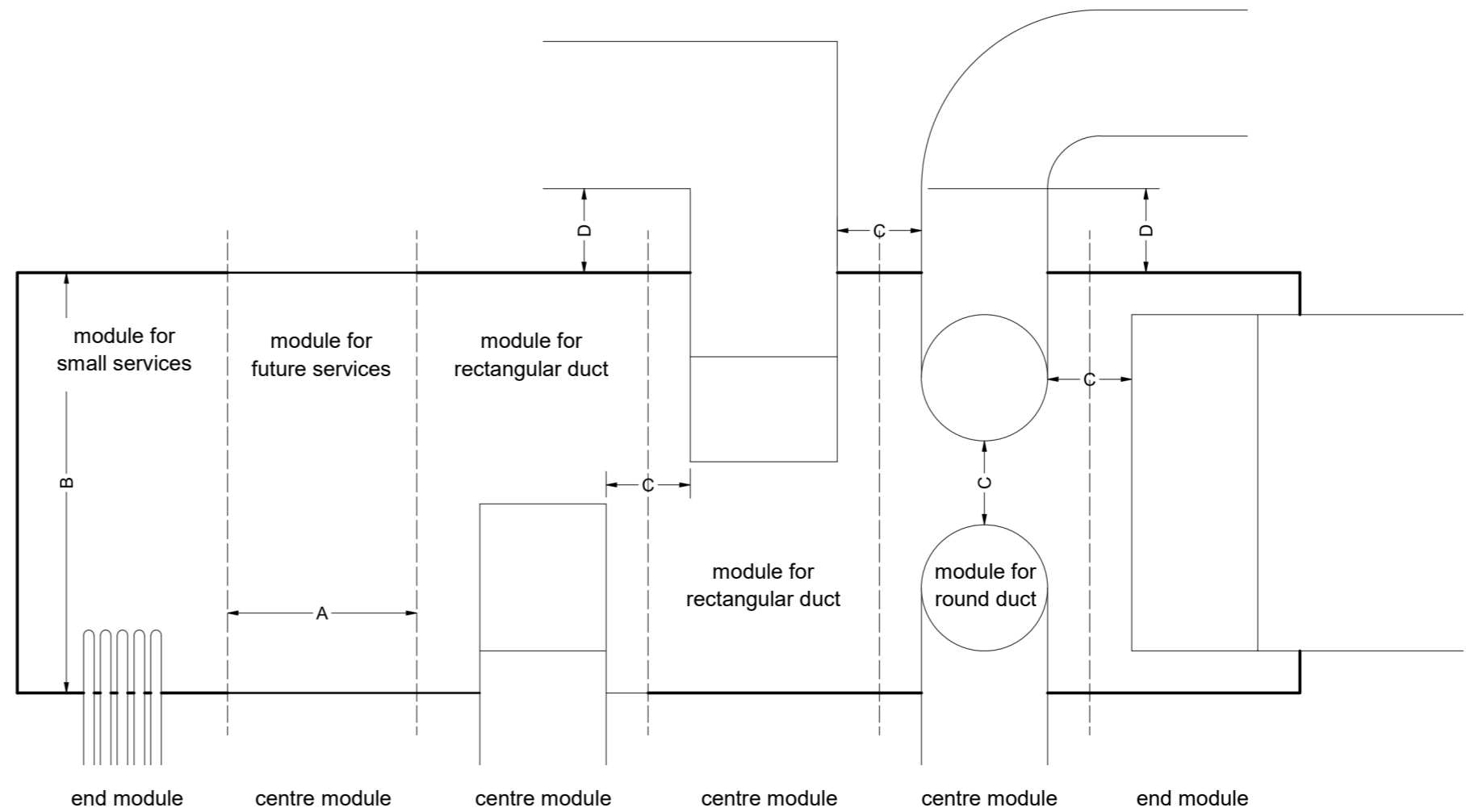
Services layout guide for MEP Designer

Roofbox P - Prefabricated modular riser weathering system

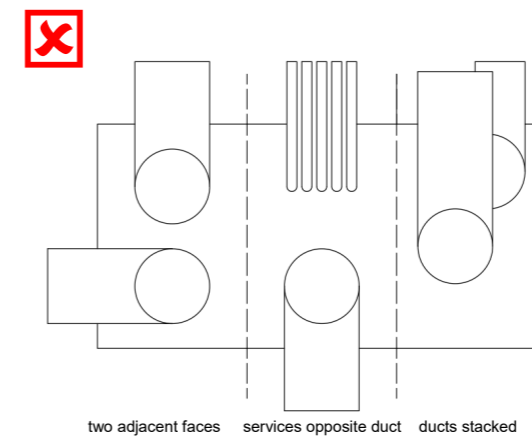
- Supplied to site as prefabricated modules that can be joined together over the riser opening (see diagram)
- Modules can be supplied 'bare' with access hatches for installing smaller services and cable trays
- Modules can be factory fitted and sealed with ductwork bends
- They are available for mounting on site formed kerb or supplied with integral kerb upstand for fitting directly over the roof opening

Basic rules for using the Roofbox P BIM models

- Select either the kerb mounted or kerb included version
- All services **must** be routed through the penetration zone marked on the model
- Services should have a minimum of 200mm between them horizontally (allowing for insulation)
- Services should be kept as low as possible within the penetration zone
- Services should not be stacked vertically where they exit the Roofbox
- Services must exit the Roofbox in a horizontal and perpendicular fashion, not at an angle or inclined
- Services must extend a minimum of 200mm beyond the Roofbox before changing direction including bend radii
- Stated maximum and minimum dimensions should be observed



two ducts per unit only available as pre-installed, and must be:
 - 300mm max duct dimension
 - 1000mm min cabinet height



Dim	Limits
A	350mm min module length 1000mm max module length
B	350mm min module width 1500mm max module width
C	200mm min between services
D	200mm min clearance to duct or duct bend