

# - K-Series Kerb -

## Fitting instructions

S

#### Health & Safety

- As with all roof work beware of falls from height
- During installation, the installer must use approved methods and all necessary PPE to prevent persons and objects falling through the roof opening
- After installation the installer must ensure all roof openings are securely protected against persons or tools falling through them
- Beware of sharp edges. Ensure eye and hand protection is worn, especially when cutting or drilling the unit
- Units may be heavy and require more than one person to lift them safely.
- Never leave unfixed or loose parts on the roof where strong winds may cause them to blow off the roof

#### Storage

- ROOFBOX units and any ancillary items should be stored at ground level until they are secured in position at roof level
- ROOFBOX units and ancillary parts should be kept dry.

#### Installation

- The installation guidelines should be read completely prior to installation
- The installation of the ROOFBOX units should be undertaken by a competent person
- Final weathering details are the responsibility of the installing contractor or subsequent contractors
- Wherever possible ROOFBOX units should be installed prior to the running of services through the roof opening
- Pipes and cables should be independently supported from the structure and not relying on the ROOFBOX for support.
- ROOFBOX units installed should not exert pressure on services passing through the unit.

#### Maintenance

- ROOFBOX units should be inspected regularly to check for damage
- Damage to the paintwork should be reinstated as soon as possible with touch-up paint available from Nicholson
- ROOFBOX units should be washed down with a water & mild detergent solution annually to preserve the PPC finish.
- ROOFBOX units with a standard PPC finish should not be installed in a marine environment. Please speak to Nicholson for further information

## Kerb upstand install

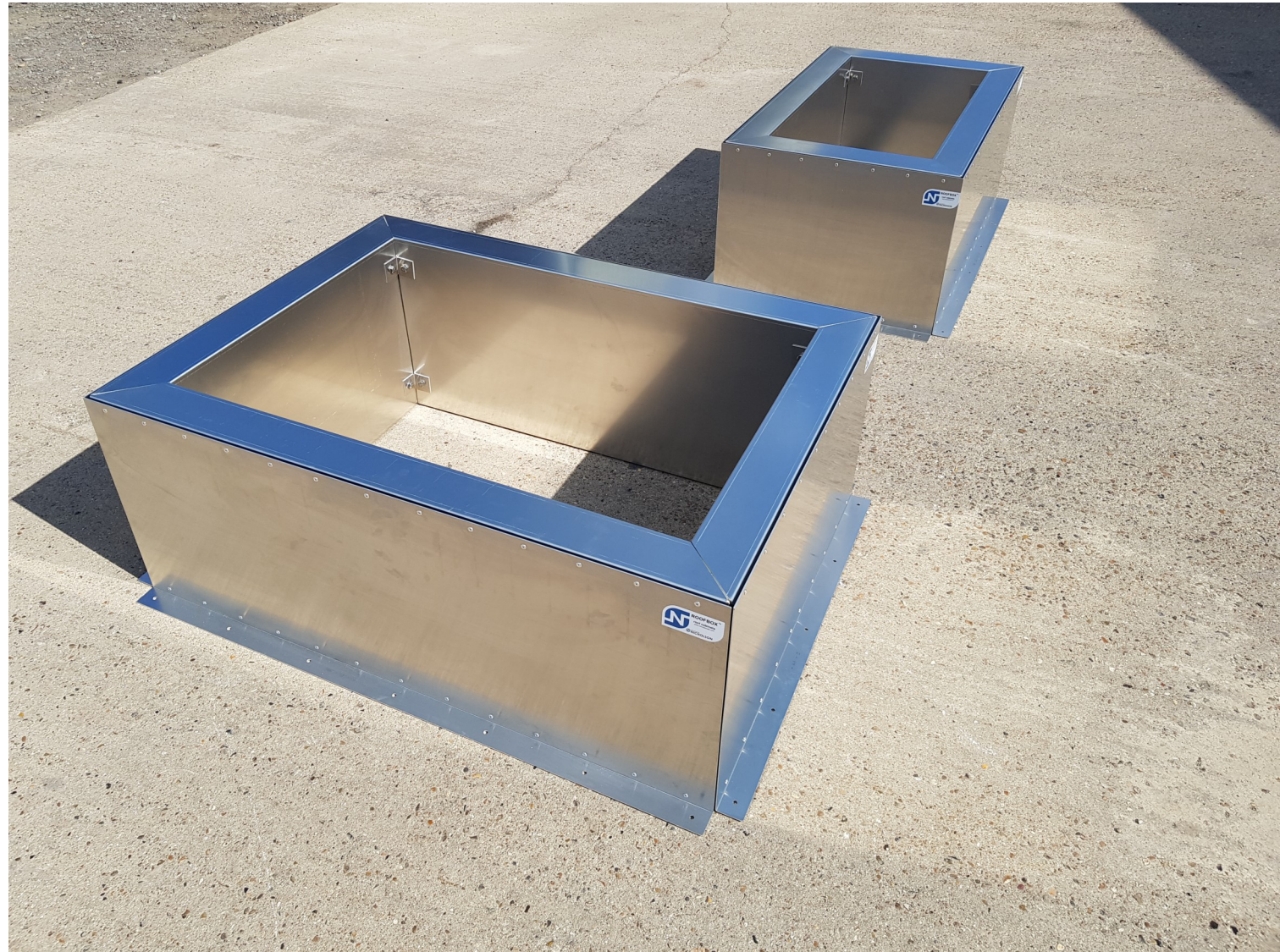
### Notes:

The kerb upstand has be pre-assembled to help with installation.

This location is a freestanding Roofbox type

Position the kerb upstand around the roof penetration and fix down to the roof deck using appropriate fixings, using the holes provided in the lower fixing lip.

Ensure that the kerb upstand is positioned level and square to avoid problems when installing the Roofbox framework.



## Kerb upstand weathering

### Notes:

Install insulation and roof coverings in the usual way, weathering up the kerb upstand in accordance with membrane manufacturers guidelines.

This will leave the K-Series Kerb upstand ready to receive the Roofbox.

