



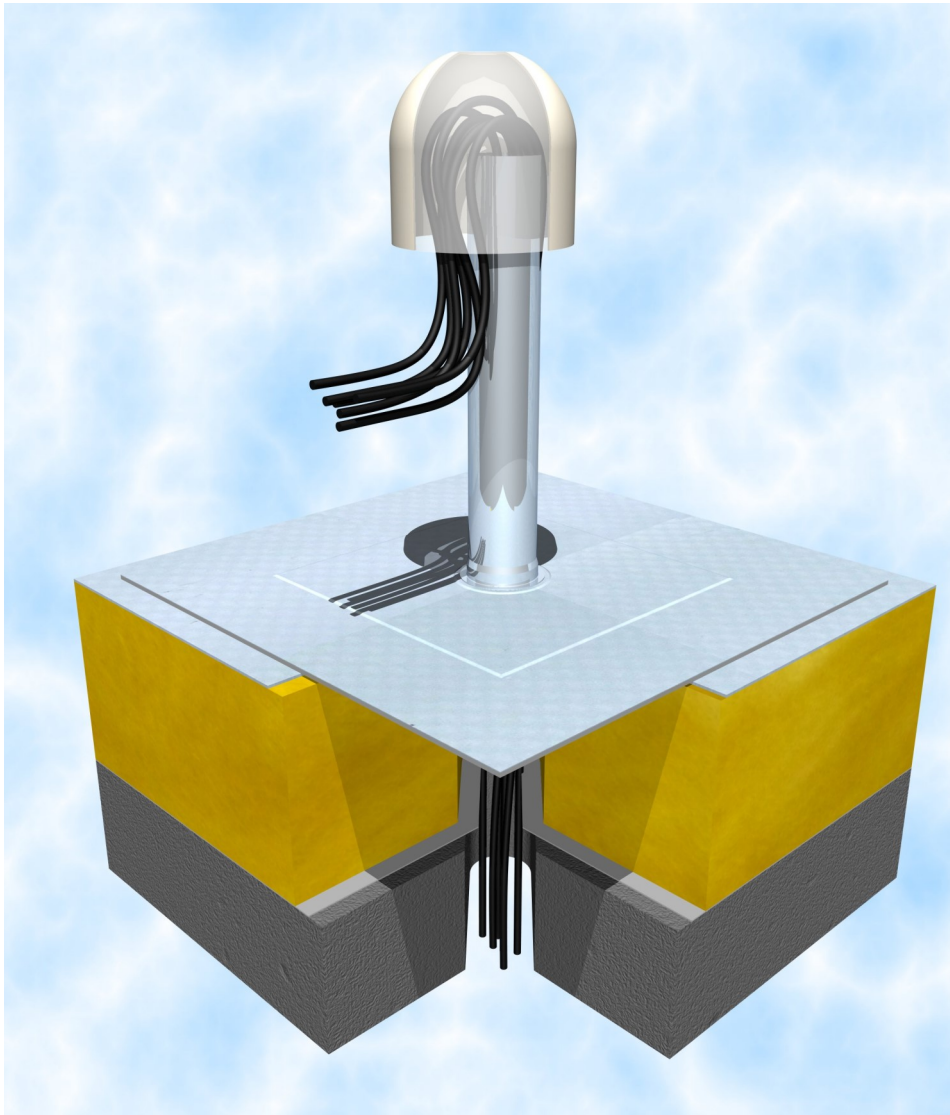
# Fitting Instructions for RP50SP

## Roof Penetration Fitting with Single Ply



Tel 0845 0098 980  
Fax 0845 6588 980  
Email [info@nicholsonsts.com](mailto:info@nicholsonsts.com)  
Web [www.nicholsonsts.com](http://www.nicholsonsts.com)

# roof penetration fittings **ROOFPORT™**



## **FITTING INSTRUCTIONS - ROOFER**

- 1) The RP50SP has a factory fitted single ply flange. It is important that this flange is the same material or compatible with the roof membrane to which it is being fixed.
- 2) The unit should be fixed to the roof through the fixing plate located under the single ply flange using appropriate fixings.
- 3) Once fixed in position, the single ply membrane flange should be jointed to the membrane beneath in accordance with the membrane manufacturers instructions..
- 4) Upon completion, check that the two screws holding the cowl in place are fully tightened.

## **MECHANICAL SERVICES ENGINEER**

- 1) The cowl may be removed for easy access and running of cables etc.
- 2) Ensure that the edge protector to the top of the stainless steel upstand is in place and that the cables will not be damaged.
- 3) After all cables are installed, seal the neck of the upstand using appropriate wadding or gap filling material.
- 4) Re-secure the cowl and tighten screws. Ensure that the anti slip washers are located between the fastener and the outside of the cowl.